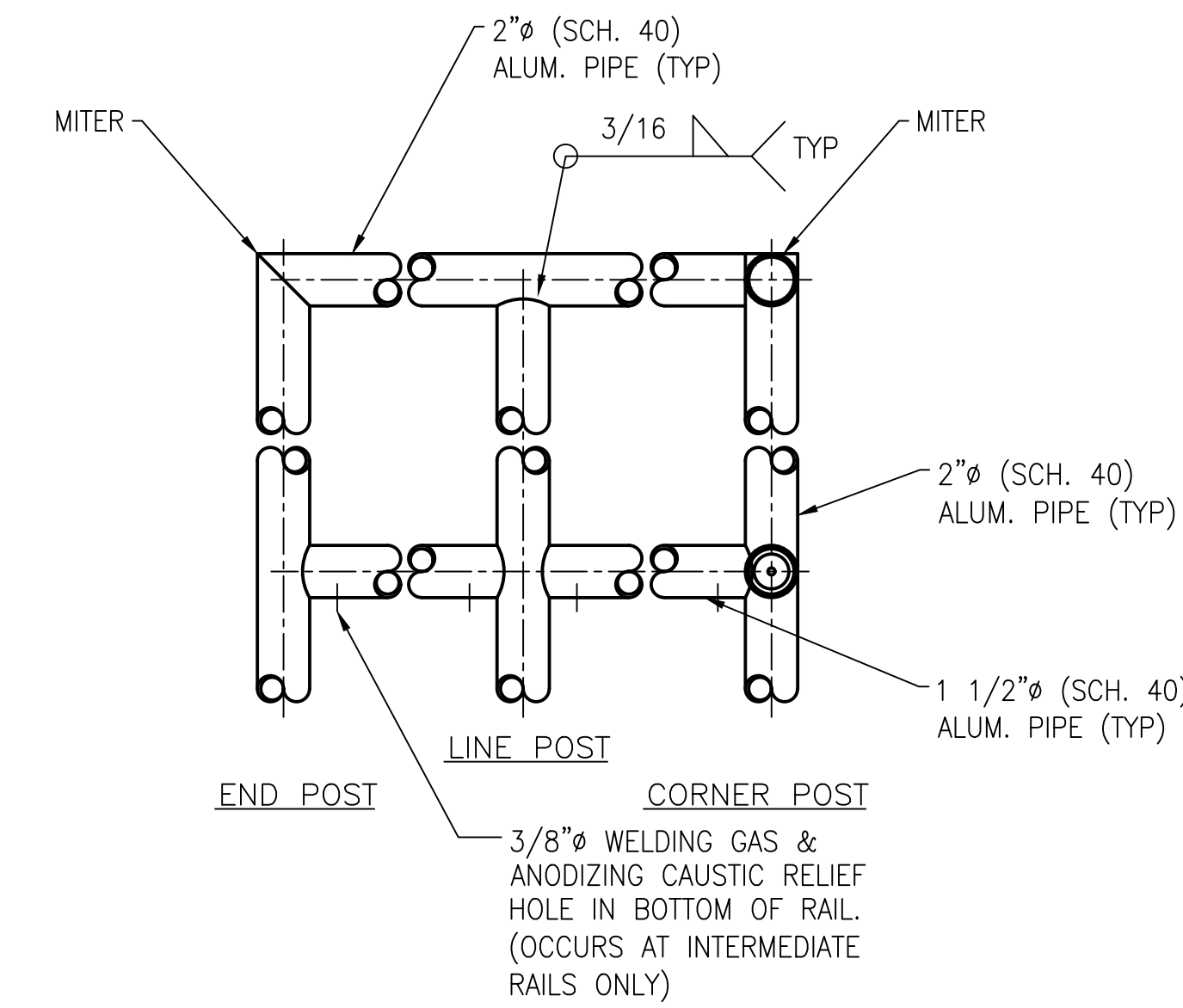


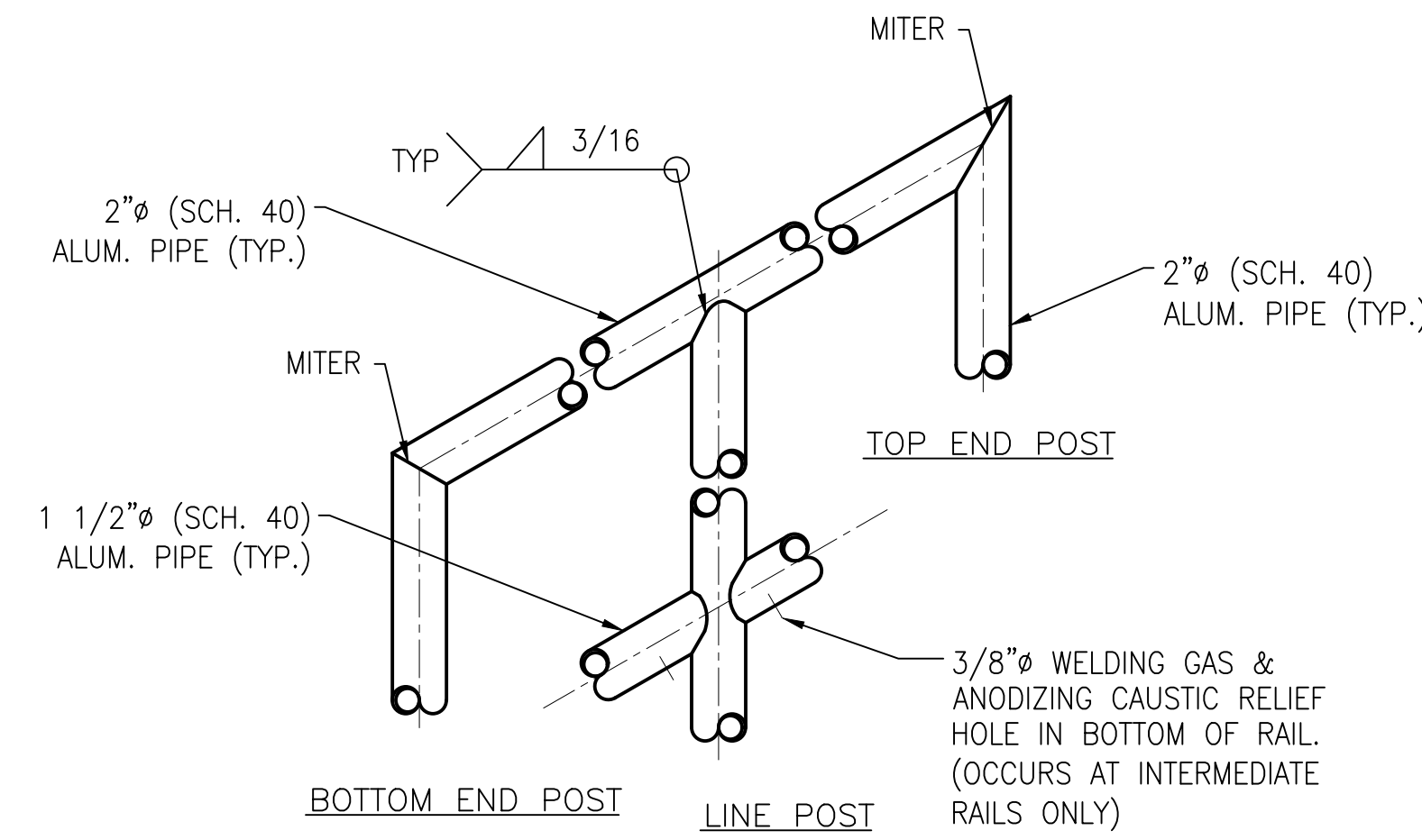
GENERAL NOTES

- ALL RAIL IS TO BE OF WELDED CONSTRUCTION U.N.O.
- ALL MID. RAILS ARE TO BE FABRICATED FROM 1 1/2" (SCH. 40) ALUMINUM PIPE (6061-T6 ALLOY) (U.N.O.)
- ALL POSTS AND TOP RAILS ARE TO BE FABRICATED FROM 2" (SCH. 80) ALUMINUM PIPE (6061-T6 ALLOY) (U.N.O.)
- ALL EXTRUDED COMPONENTS ARE 6005A-T61 ALLOY, CAST COMPONENTS ARE 535 ALLOY
- ALL FASTENERS (SELF TAPPING SCREWS, MACHINE BOLTS, ADHESIVE ANCHORS, ETC.) TO BE 304 STAINLESS STEEL
- ALL RAILING SURFACES IN CONTACT WITH CONCRETE OR DISSIMILAR METALS SHALL RECEIVE ONE 1/16" THICK NEOPRENE GASKET (SHIPPED LOOSE FOR FIELD ATTACHMENT)
- ALL BOLTS, NUTS AND FLAT WASHERS USED TO MOUNT RAILINGS TO FLOORS, WALLS, STEEL, ETC. ARE BY PTP ENGINEERED RAILINGS
- ALL KICK PLATES ("FKP" OR "SKP") SHALL BE SHIPPED LOOSE IN 24'-0" LG. STOCK LENGTHS FOR FIELD CUTTING & DRILLING AS NEEDED
- ALL PANELS ARE FURNISHED IN ASSEMBLED 20'-0" LG. (MAX.) SECTIONS
- PIPE FOR CURVED RAIL IS FURNISHED SUB-ASSEMBLED IN 17'-0" (MAX). ROLLED LENGTHS FOR FIELD CUTTING & DRILLING AS NEEDED
** ALL RADII MUST BE VERIFIED PRIOR TO FABRICATION **
- ALL RAIL WHEN PROPERLY INSTALLED SHALL MEET OR EXCEED OSHA REQUIREMENTS
- MAX. POST SPACING TO BE 6'-0" C/C
- ALL RAIL IS TO BE FINISHED IN ACCORDANCE WITH THE ALUMINUM ASSOCIATION'S DESIGNATION M10C22A41 OR M12C22A4
- ALL DIMENSIONS SHOWN THROUGHOUT THIS SET ARE APPROXIMATE AND SHALL BE FIELD VERIFIED BEFORE FABRICATION AND INSTALLATION

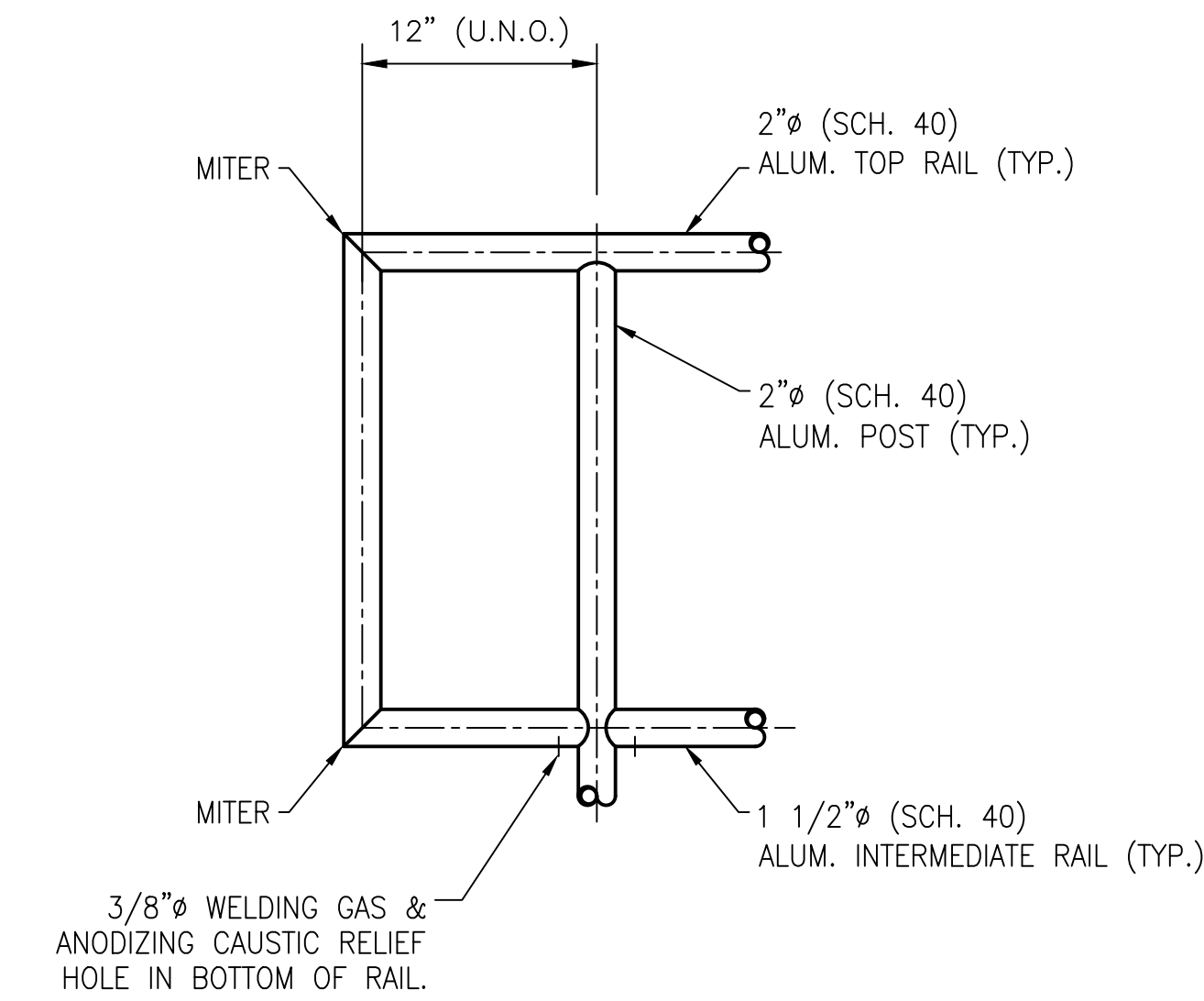
%% = SEE ERECTION DRAWINGS FOR PART NUMBER



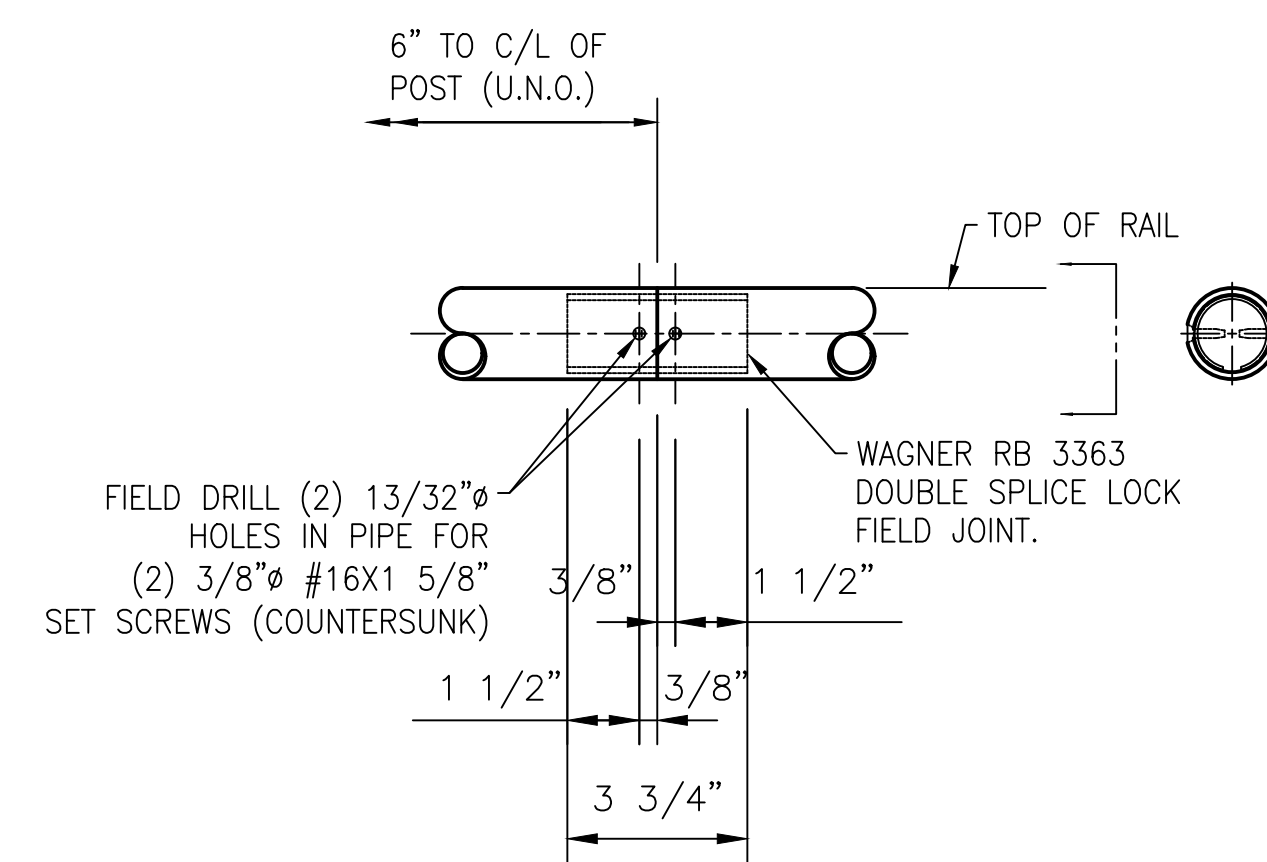
TYPICAL LEVEL RAIL CONNECTIONS



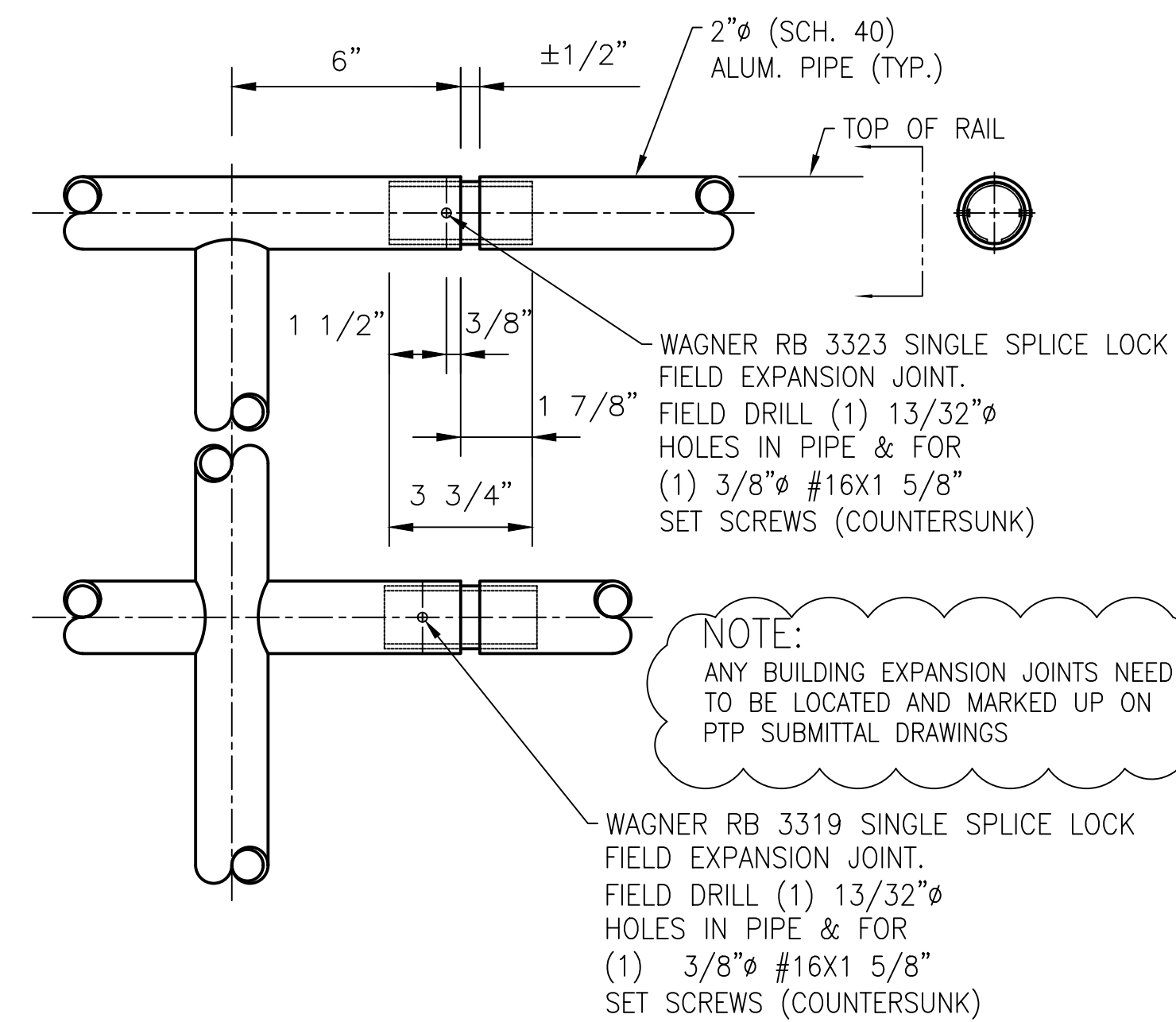
TYPICAL SLOPED RAIL CONNECTIONS



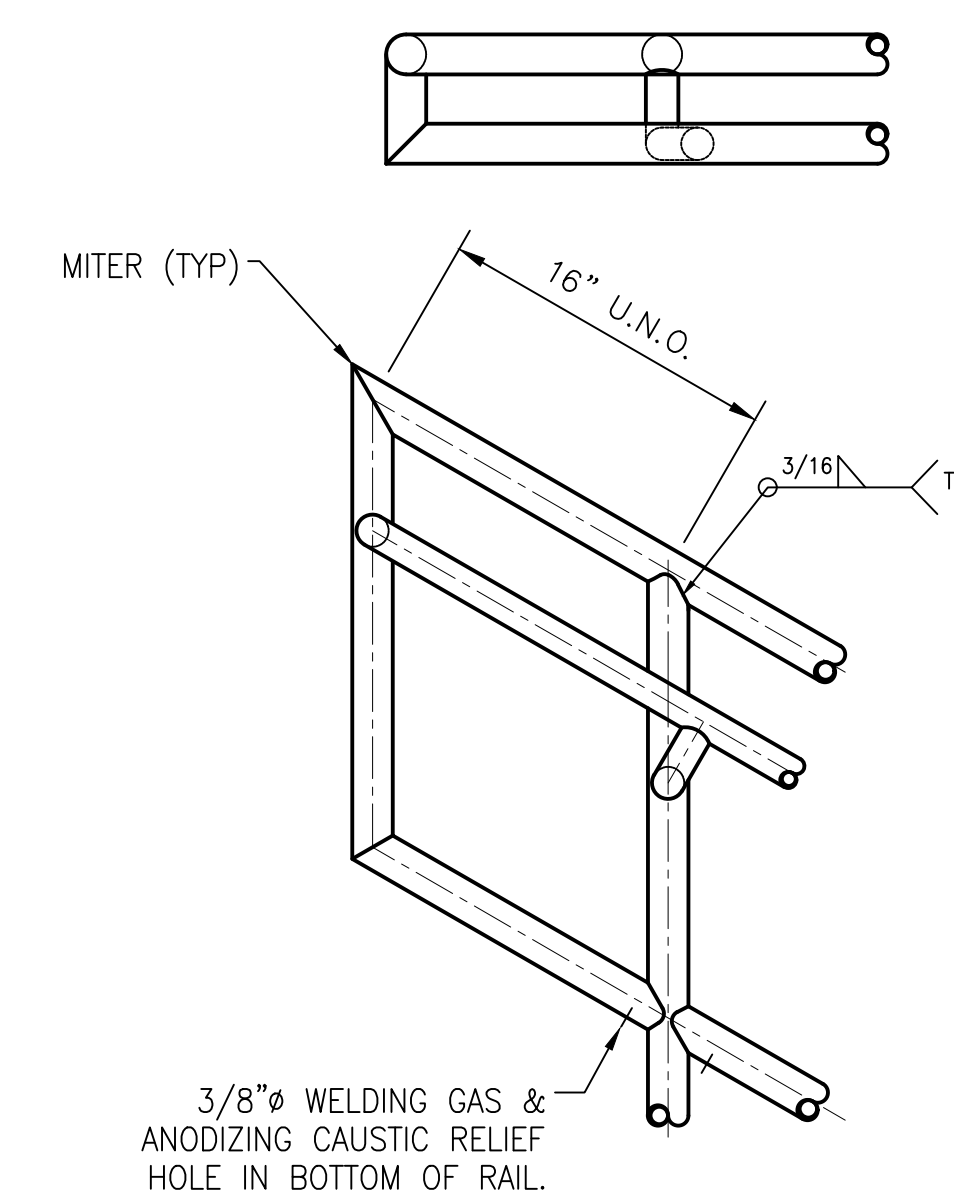
LEVEL P-END



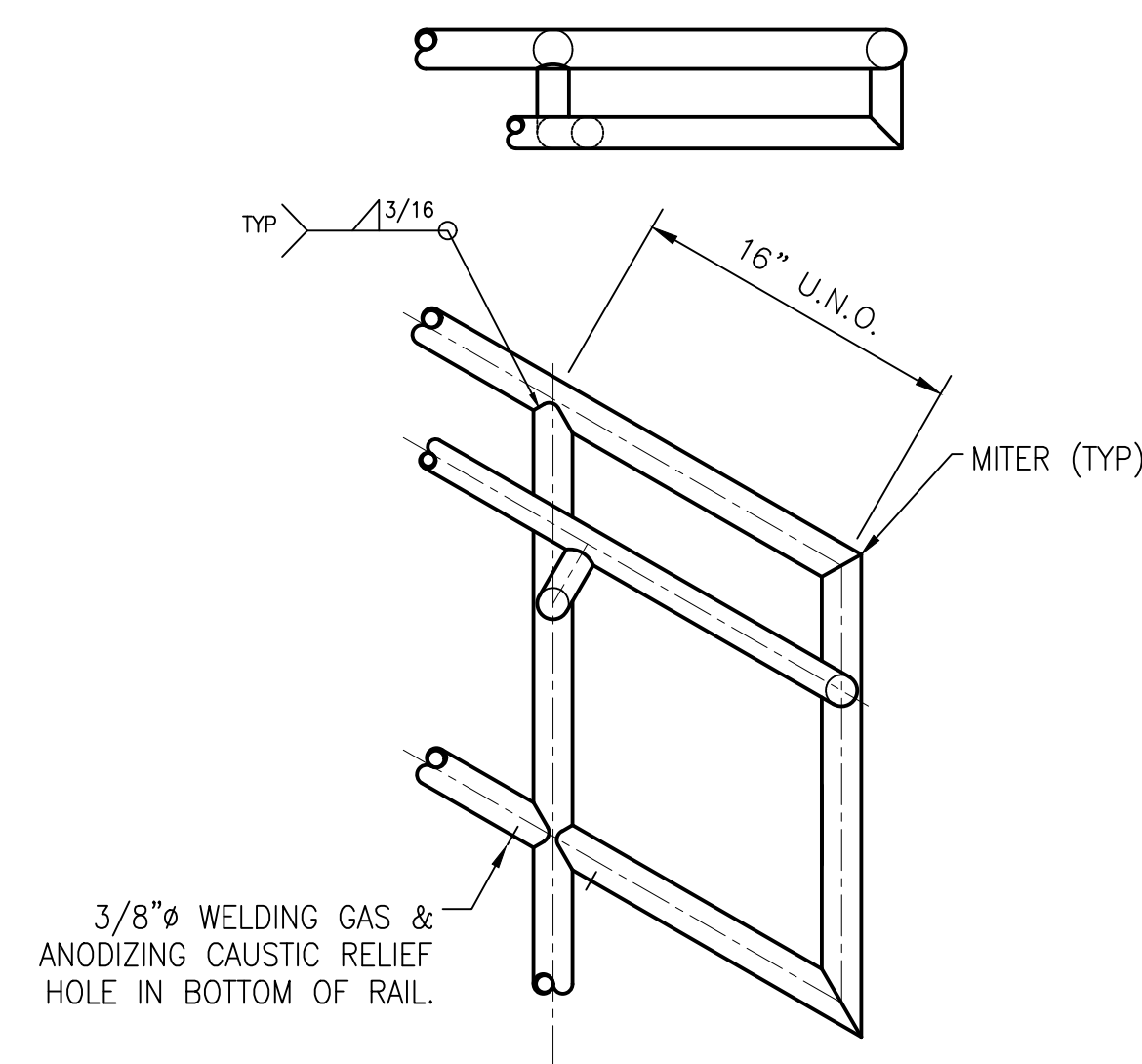
TYPICAL FIELD JOINT
(LOCATED AS NEEDED FOR STRUCTURAL STABILITY)



TYPICAL EXPANSION JOINT
(LOCATED AT BUILDING EXPANSION JOINT & AT 24'-0" MAX. O/C)

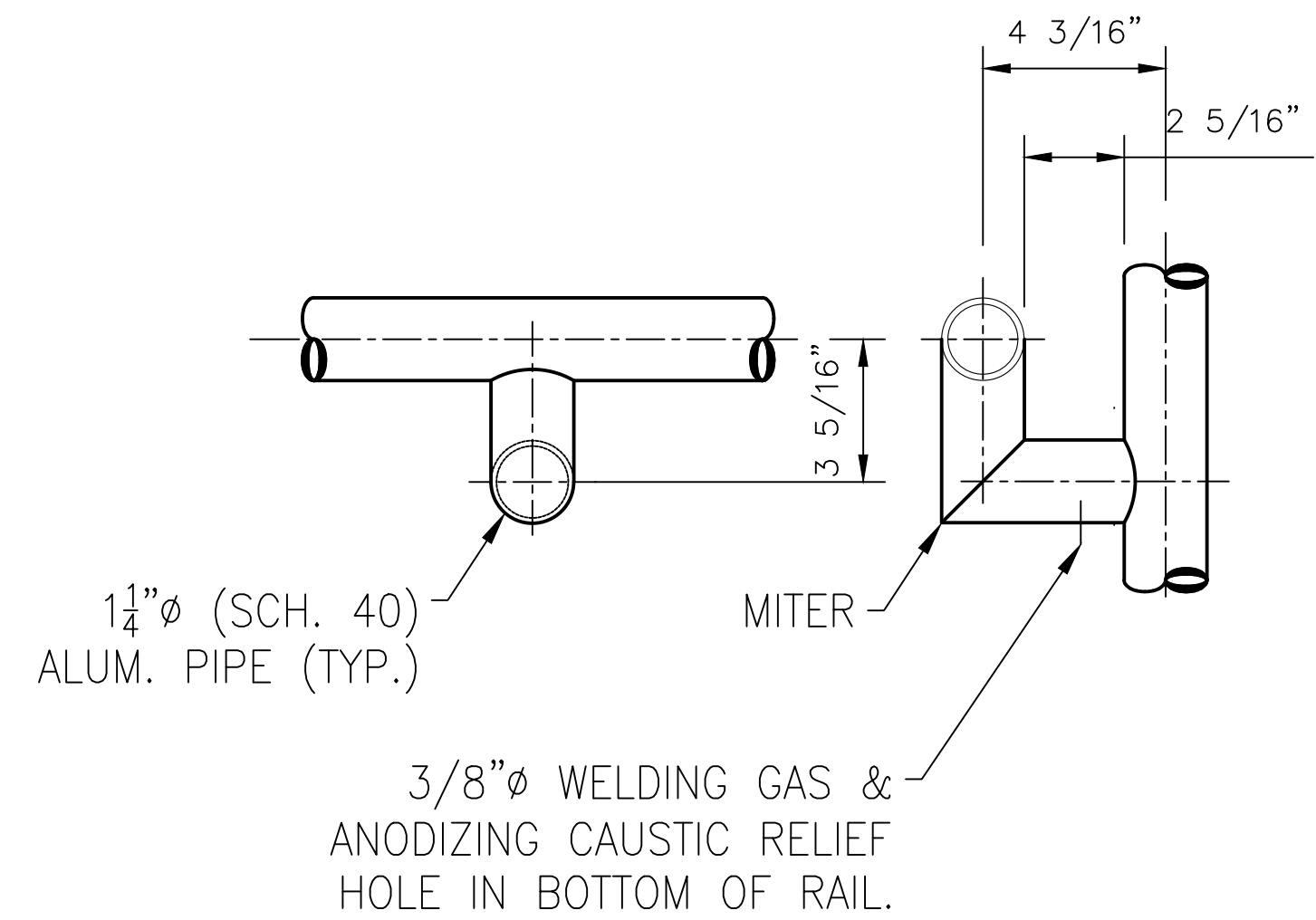


TOP RAKE P-END



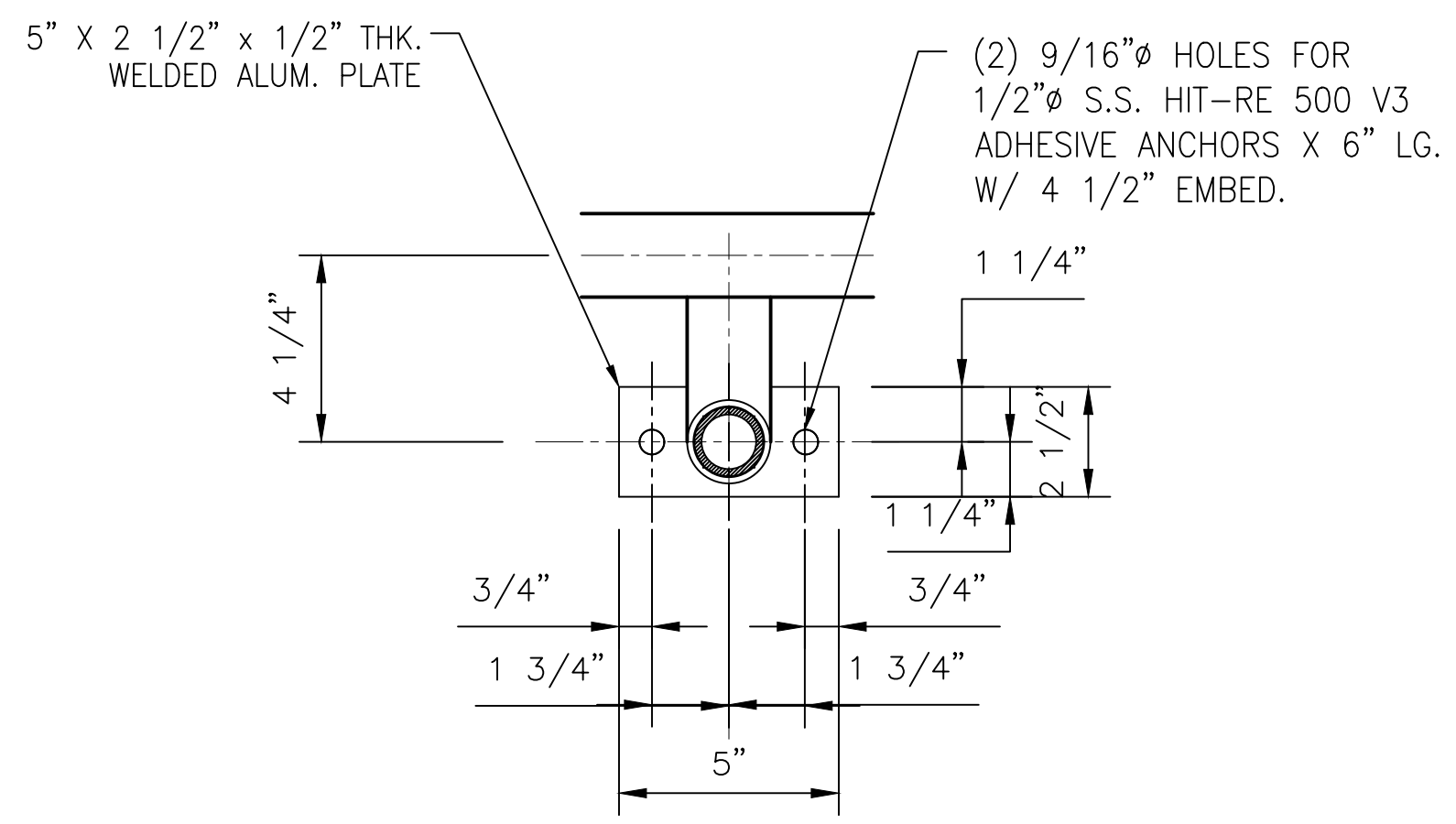
BOTTOM RAKE P-END

1	SUBMITTAL	9/19/2017			
REV	DESCRIPTION	DATE			
<p>3000 YOUNGFIELD ST. SUITE 275 WHEAT RIDGE, CO 80215 Ph. (720)508-3819 FAX (720)409-3843</p>		<p>NOTICE TO CONTRACTOR AND ERECTOR: BACK CHARGES FOR CORRECTIVE WORK OR REPLACEMENT MATERIALS WILL NOT BE ACCEPTED UNLESS AUTHORIZED BY PEAK TO PEAK ENGINEERED RAILINGS, INC. BEFORE SUCH COSTS ARE INCURRED</p>			
			<p>STANDARD DETAILS CITY, ST ALUMINUM HANDRAIL - WELDED SYSTEM - SHOP-ASSEMBLED</p>		
DESIGNER	DESIGNER	CUSTOMER	CUSTOMER	DWG TITLE	STANDARD DETAILS
CUSTOMER JOB #	XXXX-XX	PRINT DATE	3/13/2020	ISSUE DATE	3/13/2020
DETAILED BY	INT	CHECKER	INT	SCALE	NTS
				CONTRACT NO	DRAWING NO.
				XXX-XXX	SD-1



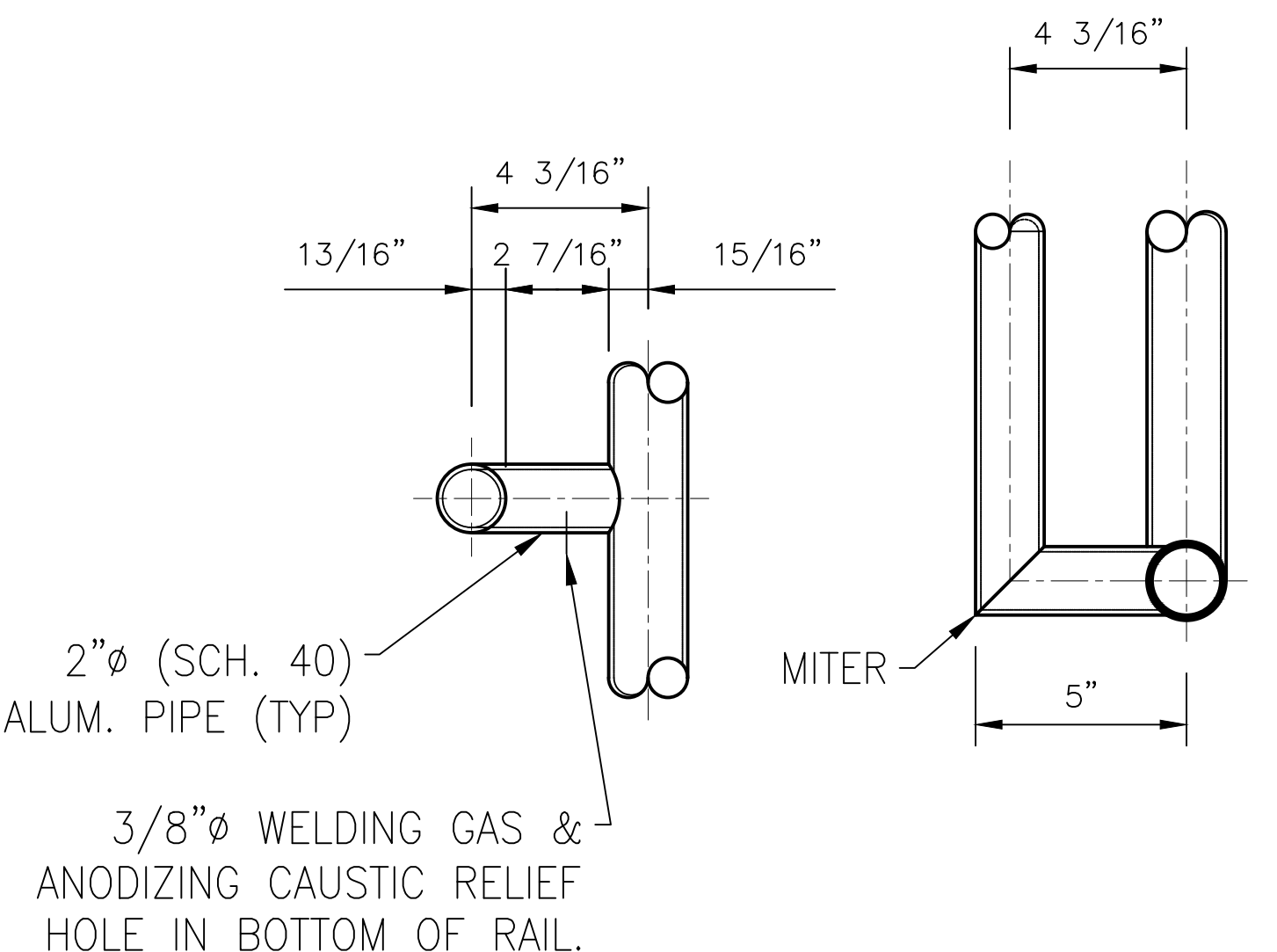
CANTILEVER RAIL BRACKET

GRB

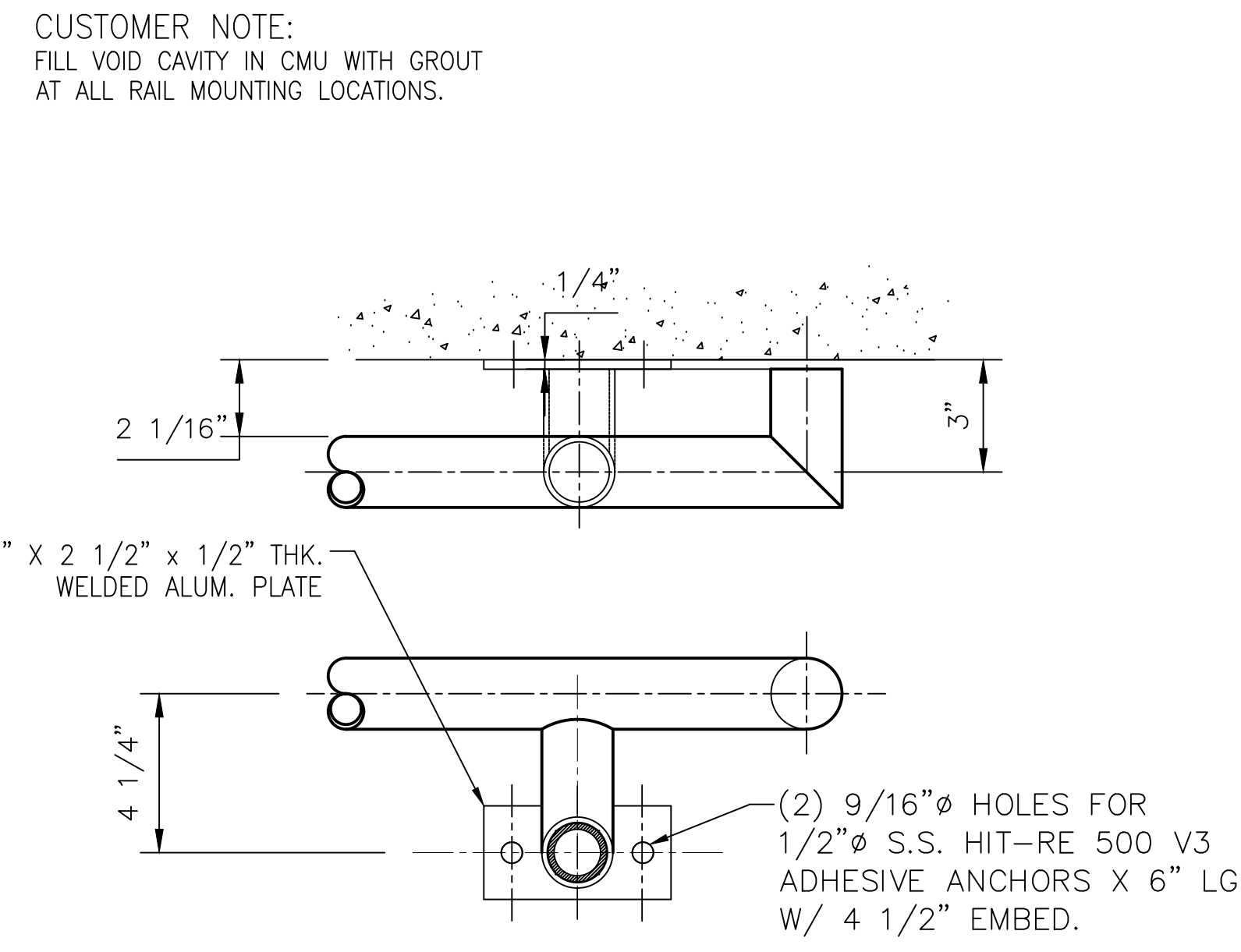


WALL BRACKET

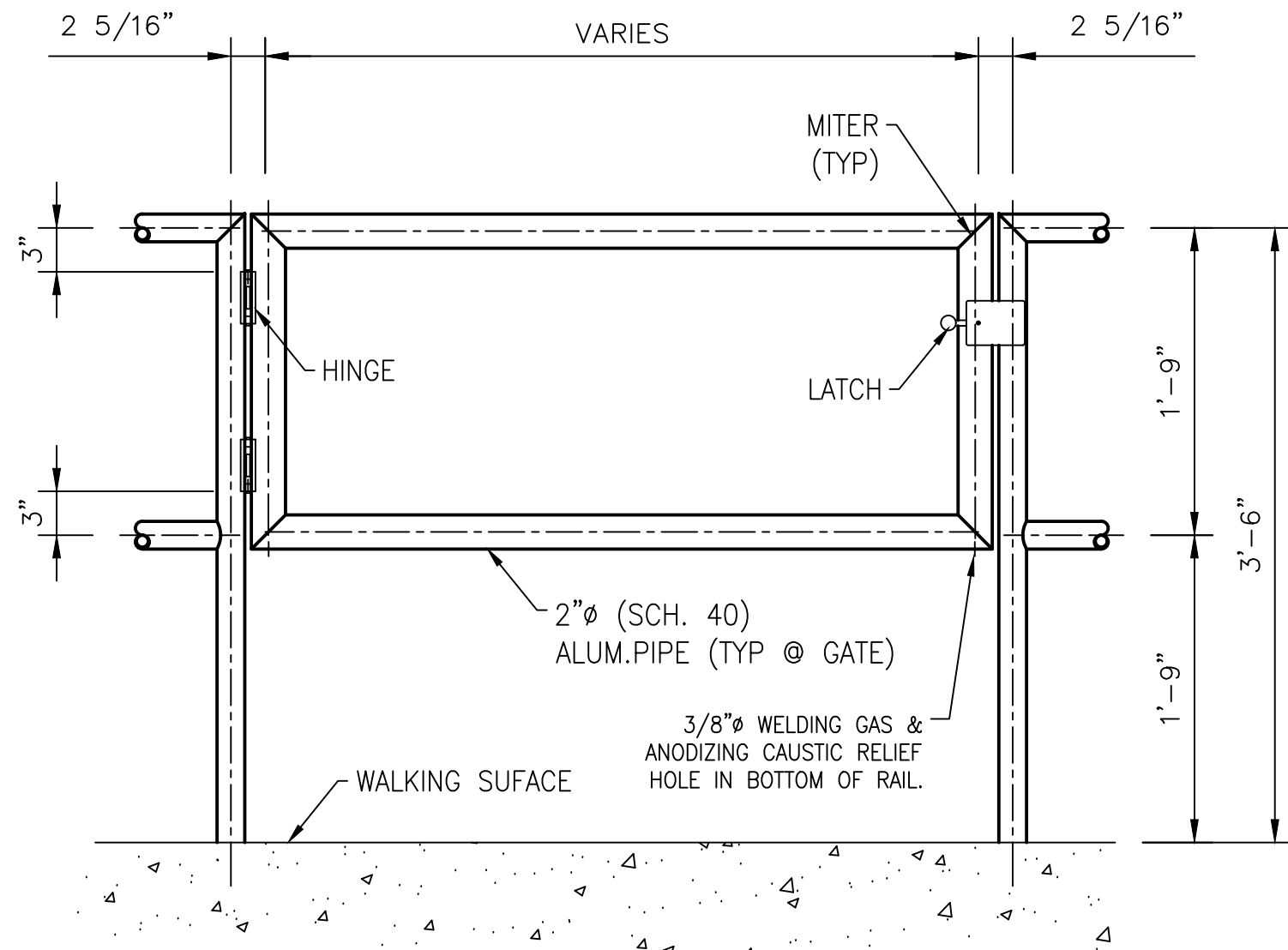
WBXX



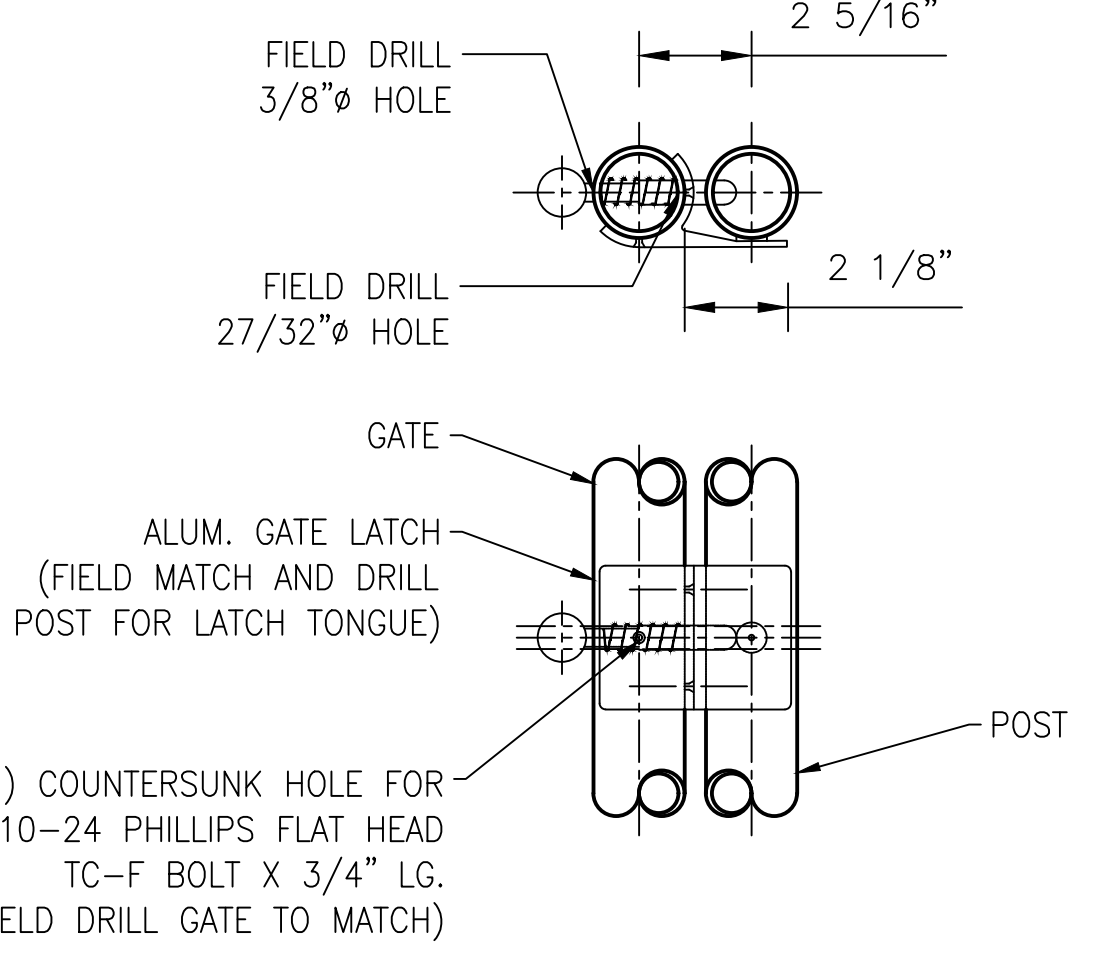
SPECIAL OFFSET RAIL CONNECTOR



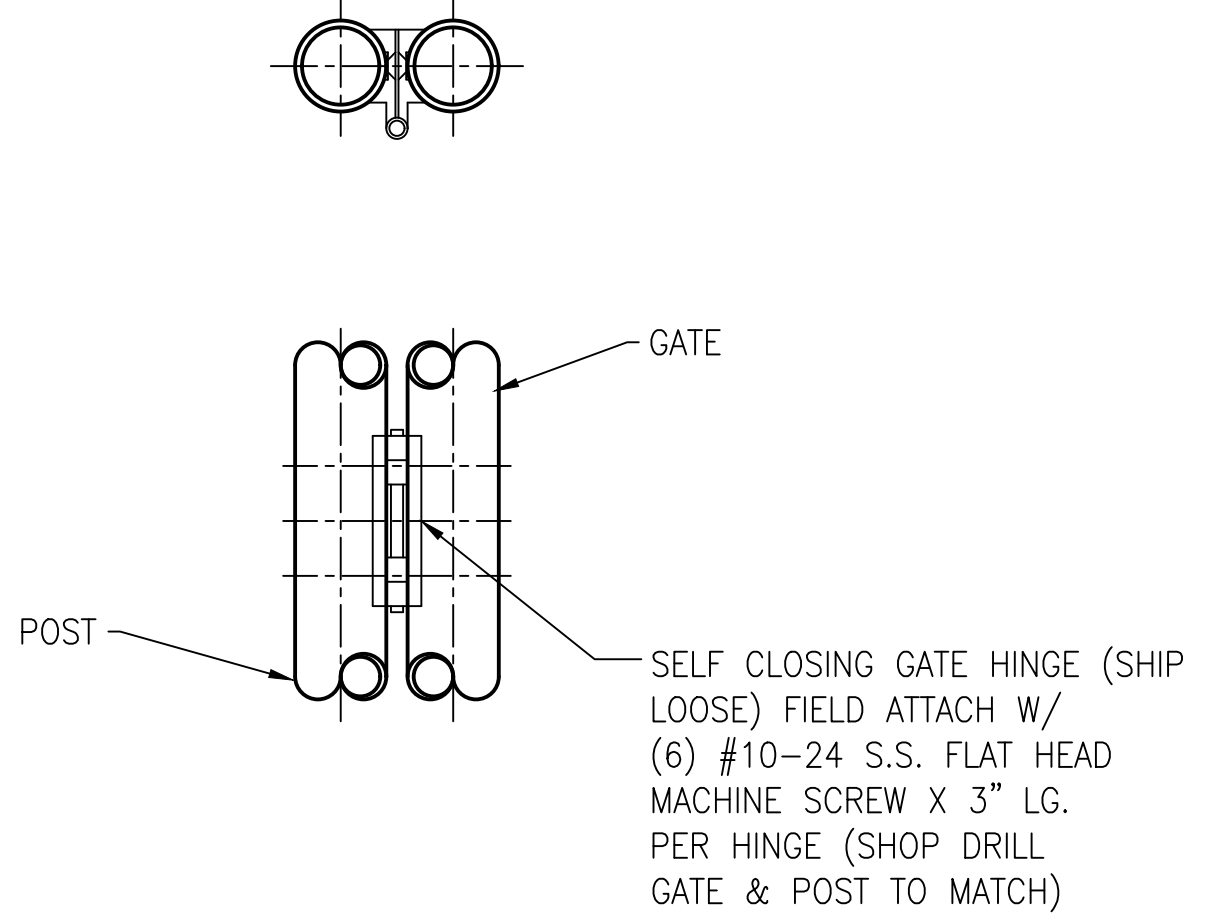
WALL RAIL END RETURN



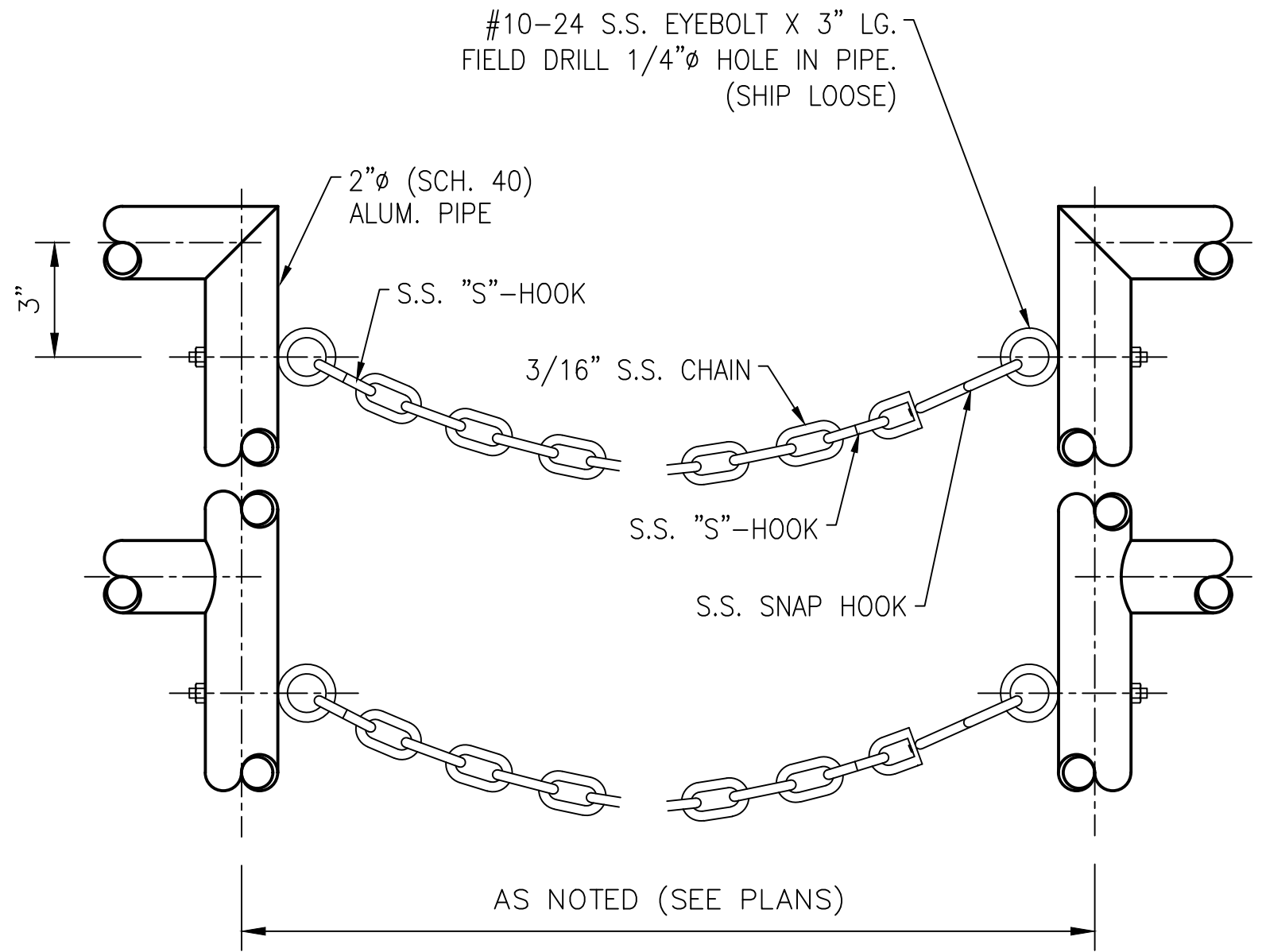
GATE



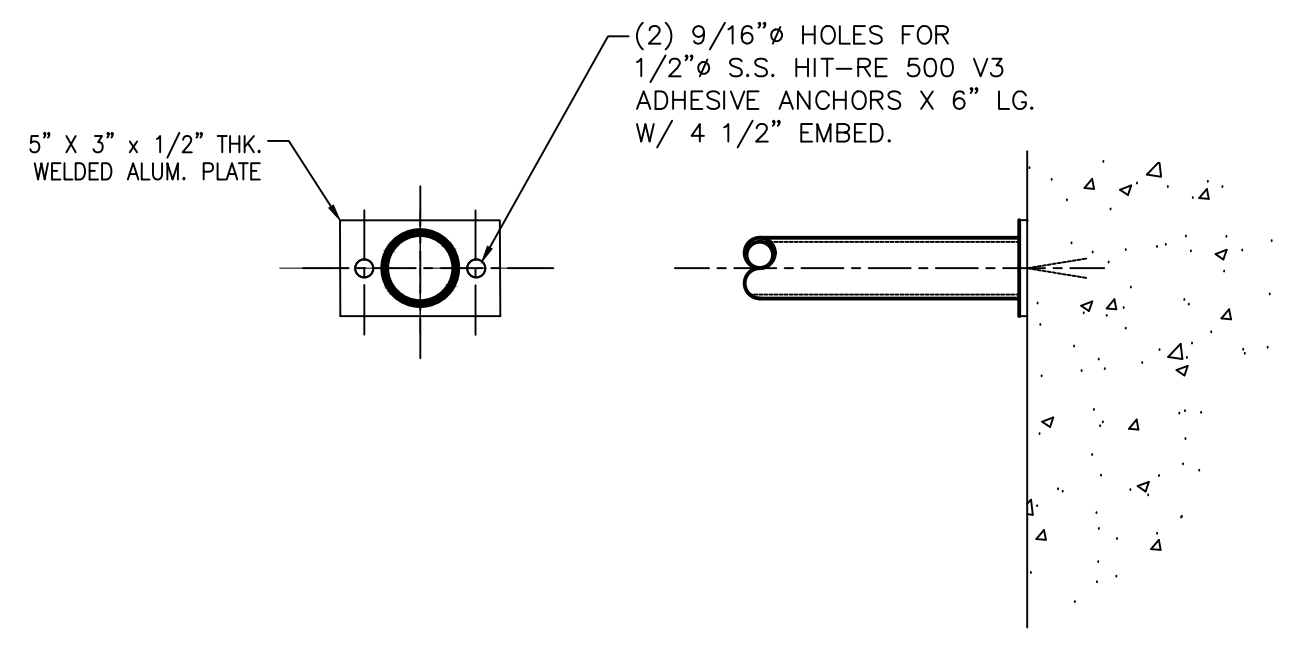
LATCH



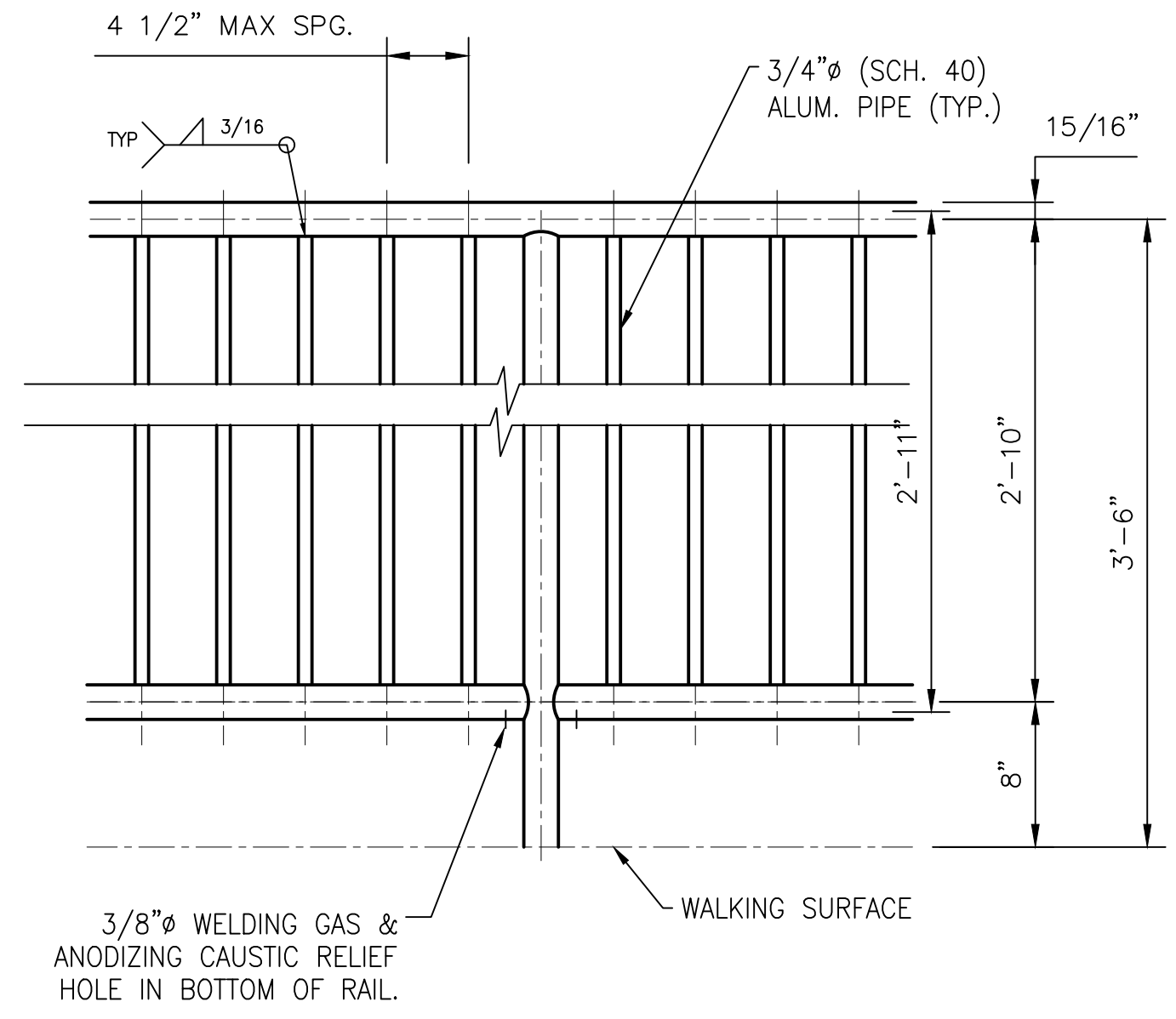
HINGE



CHAIN OPENING



WALL MOUNTED T-FITTING



PICKET RAIL HORIZONTAL PANEL

CUSTOMER NOTE:
FILL VOID CAVITY IN CMU WITH GROUT
AT ALL RAIL MOUNTING LOCATIONS.

CUSTOMER NOTE:
FILL VOID CAVITY IN CMU WITH GROUT
AT ALL RAIL MOUNTING LOCATIONS.

REV	DESCRIPTION	DATE

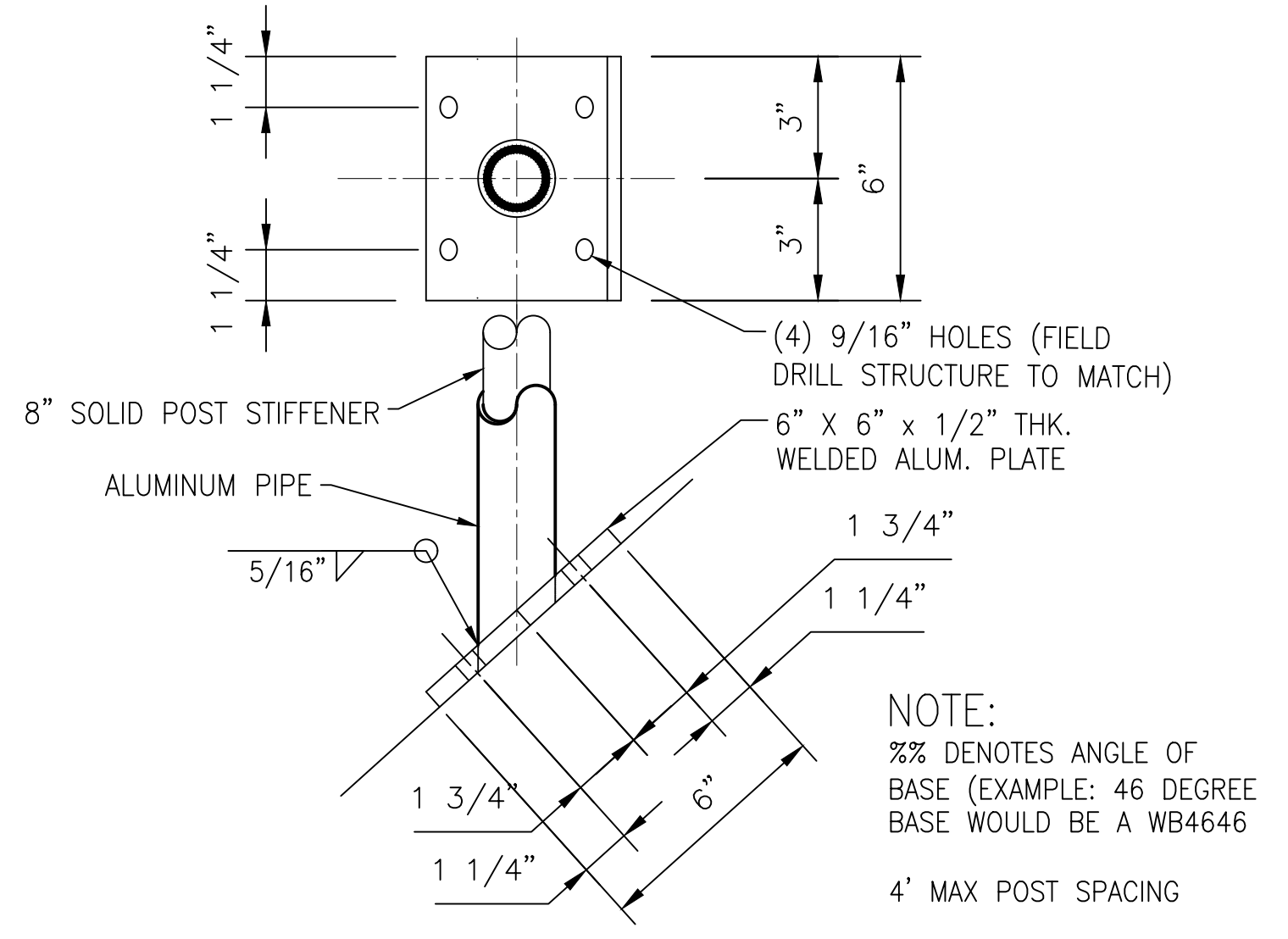
3000 YOUNGFIELD ST. SUITE 275 WHEAT RIDGE, CO 80215
Ph. (720)568-3819 FAX (720)409-3843

NOTICE TO CONTRACTOR AND ERECTOR:
BACK CHARGES FOR CORRECTIVE WORK
OR REPLACEMENT MATERIALS WILL NOT
BE ACCEPTED UNLESS AUTHORIZED BY
PEAK TO PEAK ENGINEERED RAILINGS,
INC. BEFORE SUCH COSTS ARE
INCURRED

STANDARD DETAILS
CITY, ST
ALUMINUM HANDRAIL - WELDED SYSTEM - SHOP-ASSEMBLED

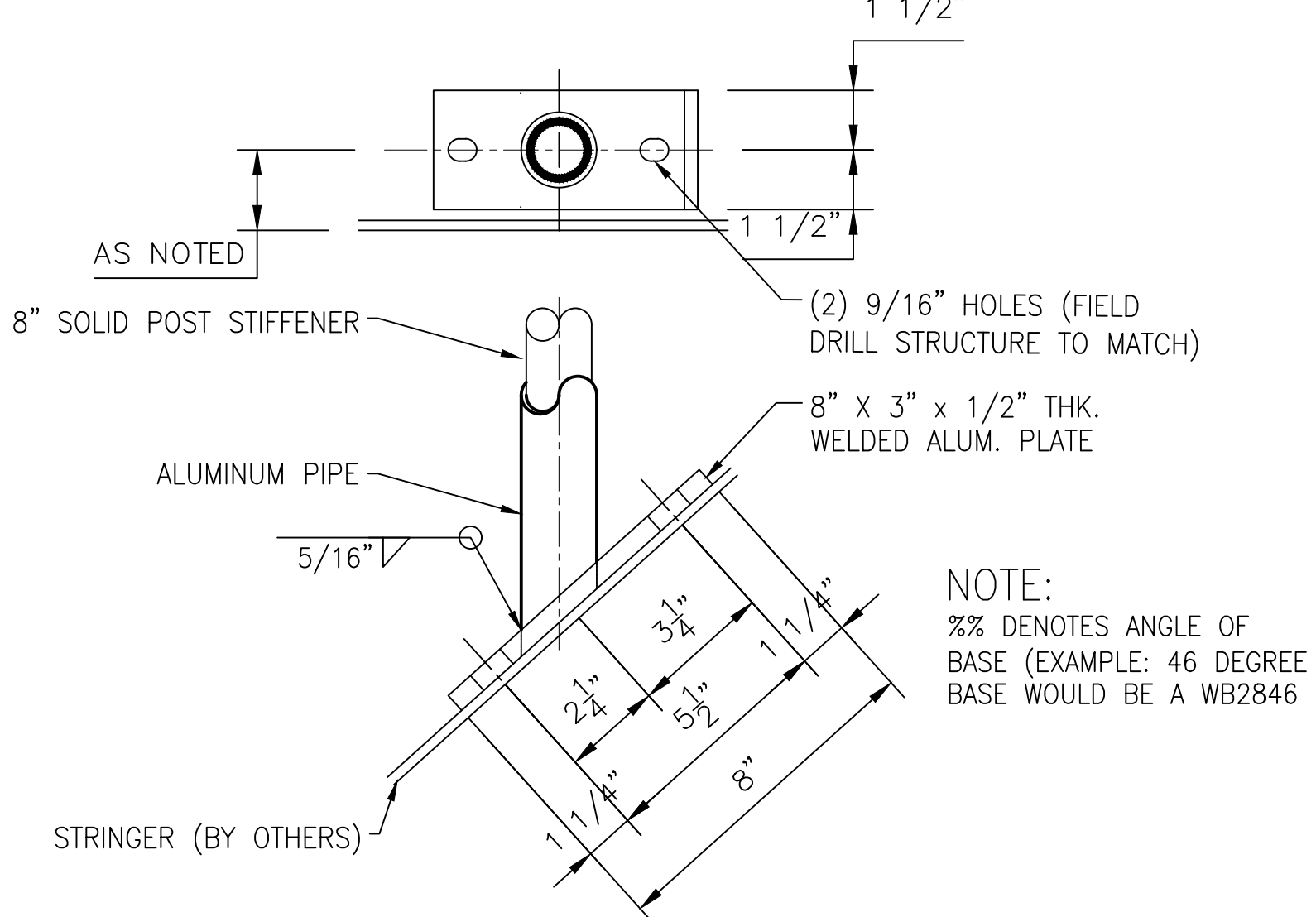
DESIGNER	DESIGNER	CUSTOMER	CUSTOMER	DWG TITLE	HANDRAIL DETAILS	
CUSTOMER JOB #	XXXX-XX	PRINT DATE	3/13/2020	ISSUE DATE	3/13/2020	
DETAILED BY	INT	CHECKER	INT	SCALE	NTS	
					CONTRACT NO	XXX-XXX
					DRAWING NO.	SD-2

MOUNTING CONDITIONS				
MATERIAL	FASTENER TYPE	FASTENER DIAMETER	FASTENER LENGTH	MINIMUM EMBED DEPTH
STEEL	S.S. MACHINE BOLT	1/2"	2"	N/A
CONCRETE	S.S. ADHESIVE ANCHORS	1/2"	6"	4 1/2"



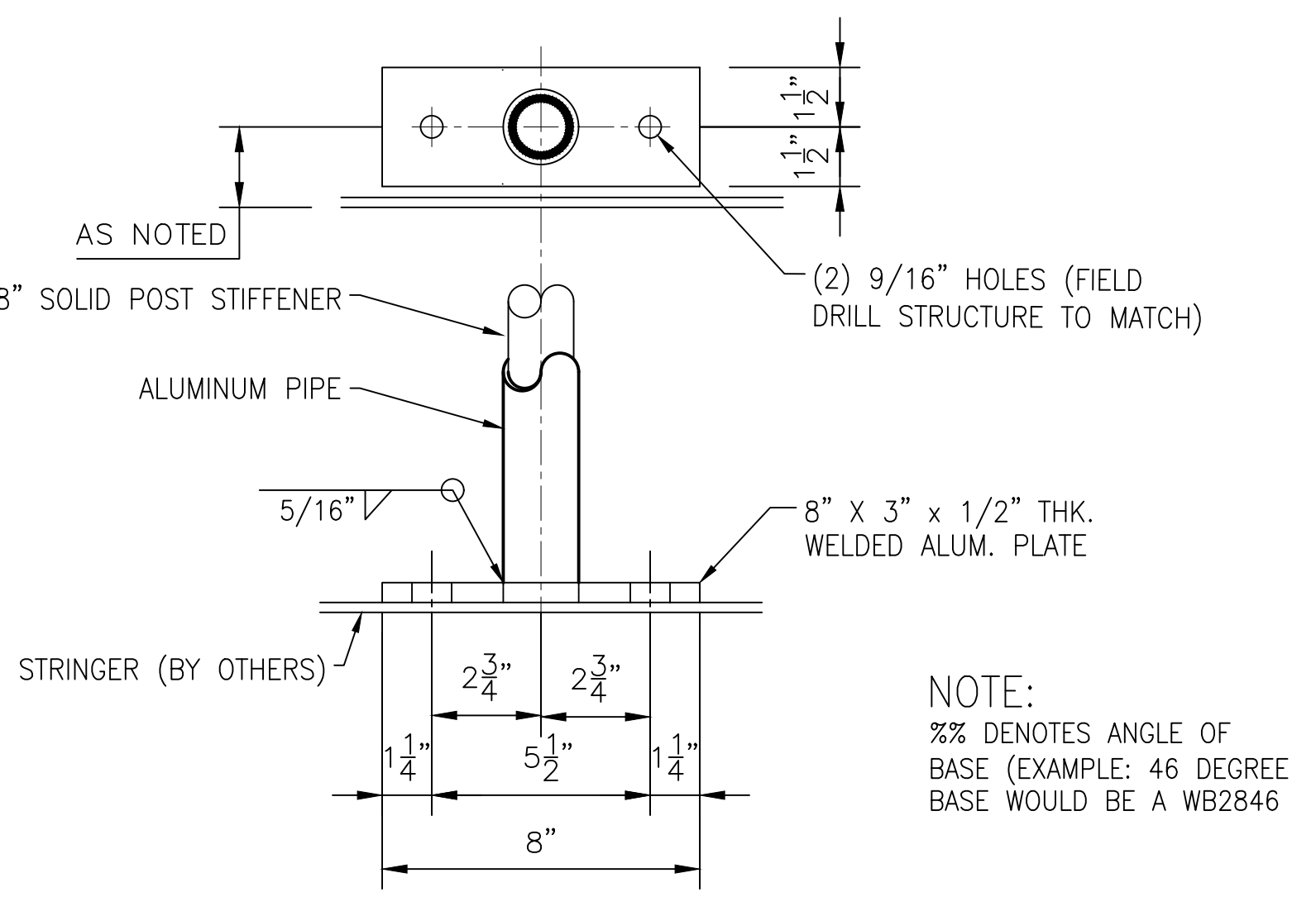
RAKE STL. LINE POST **WB66%%**

MOUNTING CONDITIONS				
MATERIAL	FASTENER TYPE	FASTENER DIAMETER	FASTENER LENGTH	MINIMUM EMBED DEPTH
STEEL	S.S. MACHINE BOLT	1/2"	2"	N/A
CONCRETE	N/A	-	-	-



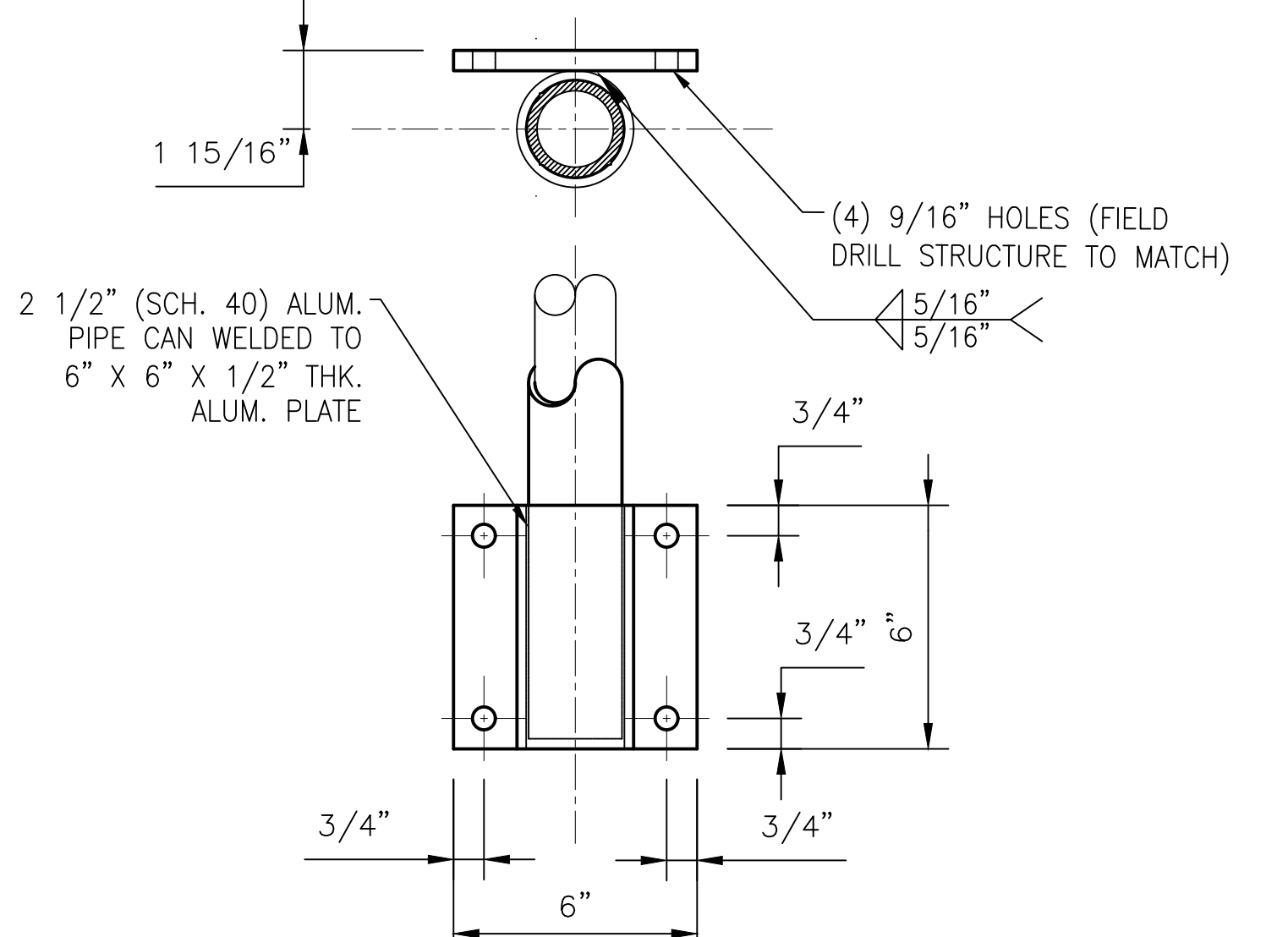
RAKE STL. LINE POST **WB38%%**

MOUNTING CONDITIONS				
MATERIAL	FASTENER TYPE	FASTENER DIAMETER	FASTENER LENGTH	MINIMUM EMBED DEPTH
STEEL	S.S. MACHINE BOLT	1/2"	2"	N/A
CONCRETE	N/A	-	-	-



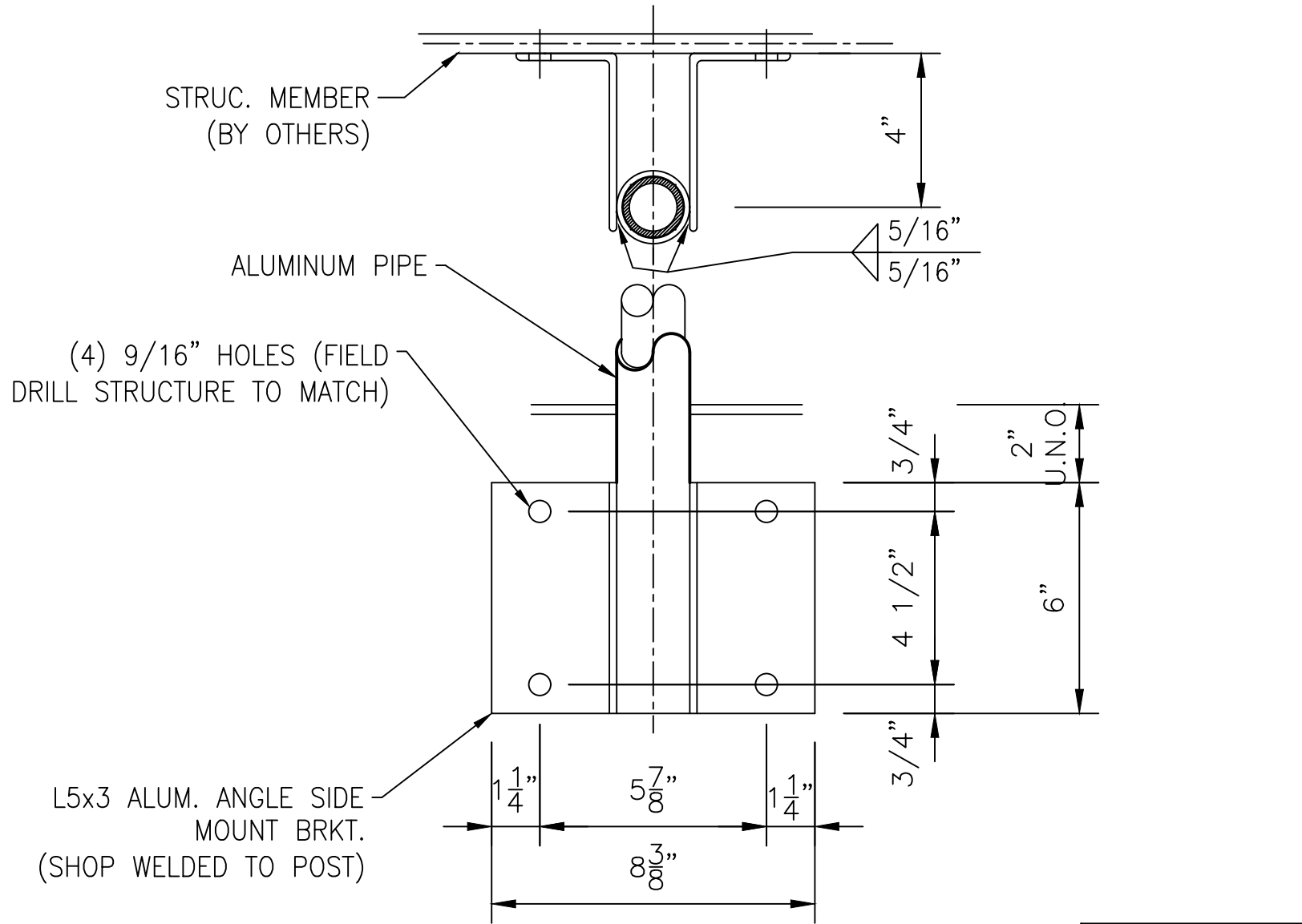
LEVEL STL. LINE POST **WB3800**

MOUNTING CONDITIONS				
MATERIAL	FASTENER TYPE	FASTENER DIAMETER	FASTENER LENGTH	MINIMUM EMBED DEPTH
STEEL	S.S. MACHINE BOLT	1/2"	2"	N/A
CONCRETE	S.S. ADHESIVE ANCHORS	1/2"	6"	4 1/2"



WELDED SIDE MOUNT **WSMA**

MOUNTING CONDITIONS				
MATERIAL	FASTENER TYPE	FASTENER DIAMETER	FASTENER LENGTH	MINIMUM EMBED DEPTH
STEEL	S.S. MACHINE BOLT	1/2"	2"	N/A
CONCRETE	S.S. ADHESIVE ANCHORS	1/2"	6"	4 1/2"



WELDED SIDE MOUNT 4-HOLE **WESM**

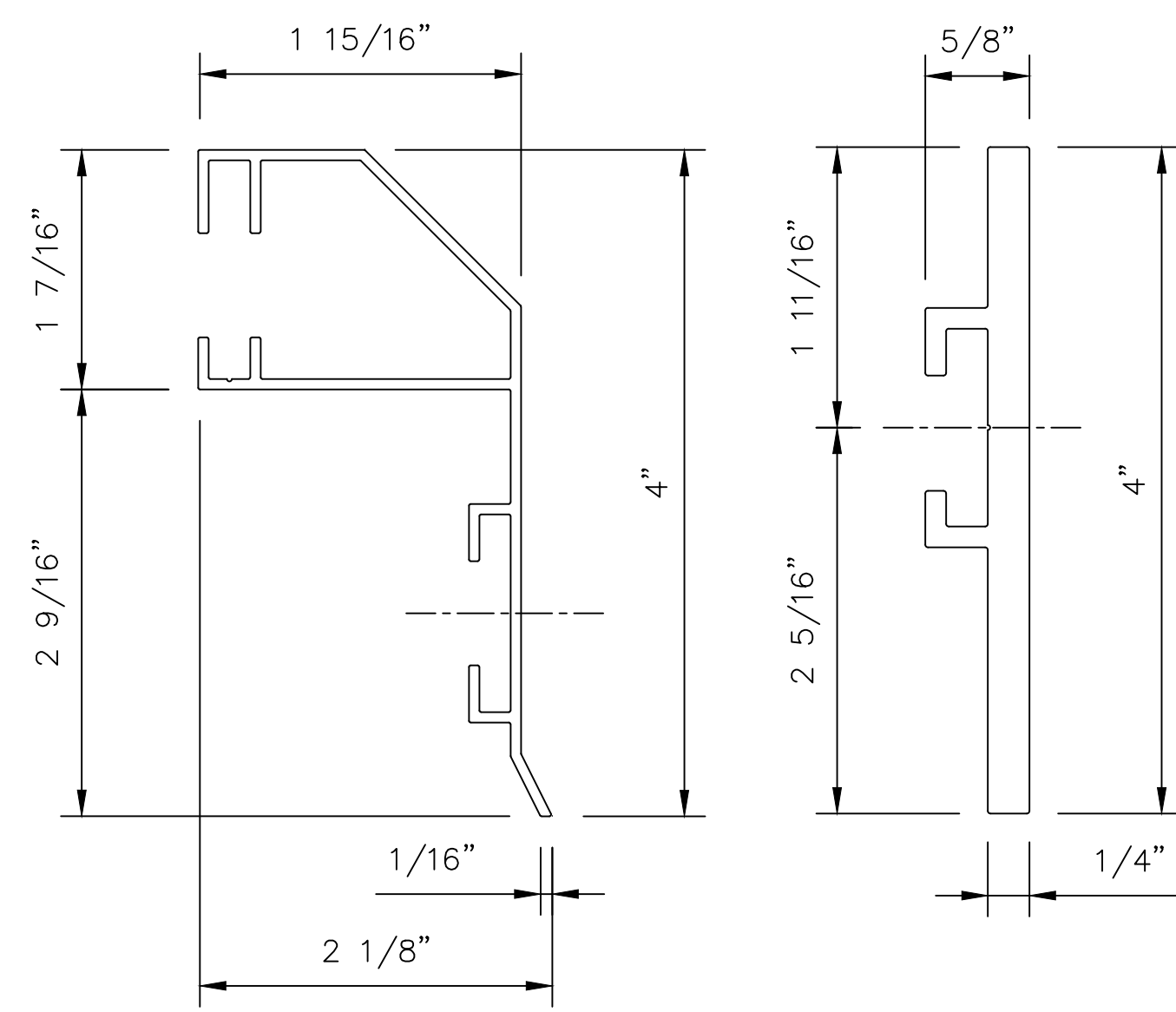
REV	DESCRIPTION	DATE

3000 YOUNGFIELD ST. SUITE 275 WHEAT RIDGE, CO 80215
Ph. (720)568-3819 FAX. (720)409-3843

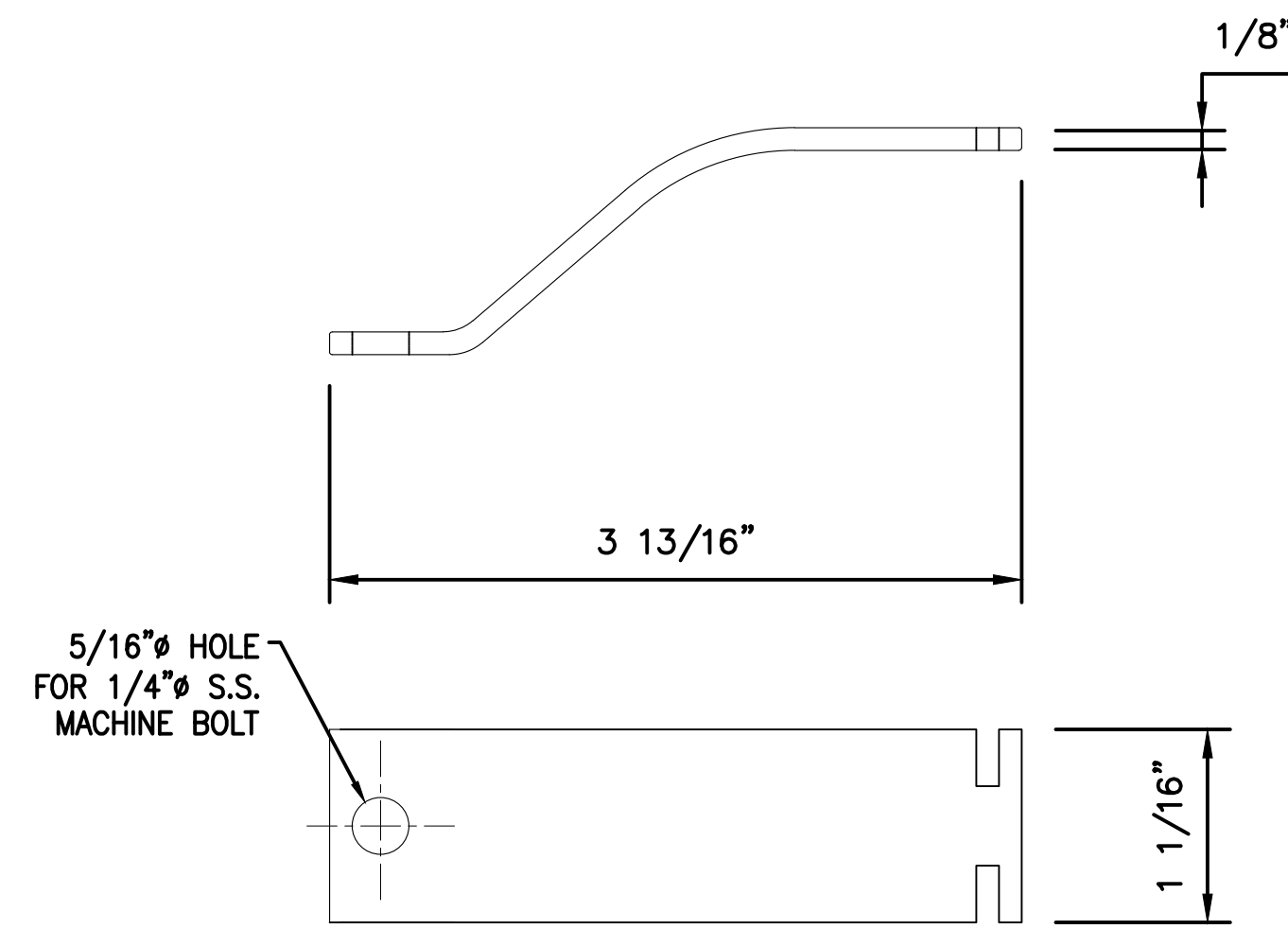
NOTICE TO CONTRACTOR AND ERECTOR:
BACK CHARGES FOR CORRECTIVE WORK OR REPLACEMENT MATERIALS WILL NOT BE ACCEPTED UNLESS AUTHORIZED BY PEAK TO PEAK ENGINEERED RAILINGS, INC. BEFORE SUCH COSTS ARE INCURRED

STANDARD DETAILS
CITY, ST
ALUMINUM HANDRAIL - WELDED SYSTEM - SHOP-ASSEMBLED

DESIGNER	DESIGNER	CUSTOMER	CUSTOMER	DWG TITLE	HANDRAIL DETAILS
CUSTOMER JOB #	XXXX-XX	PRINT DATE	3/13/2020	ISSUE DATE	3/13/2020
DETAILED BY	INT	CHECKER	INT	SCALE	NTS
					CONTRACT NO XXX-XXX
					DRAWING NO. SD-3



"FKP" "SKP"
"FKP" KICK PLATE SECTION



"WKB" BRACKET

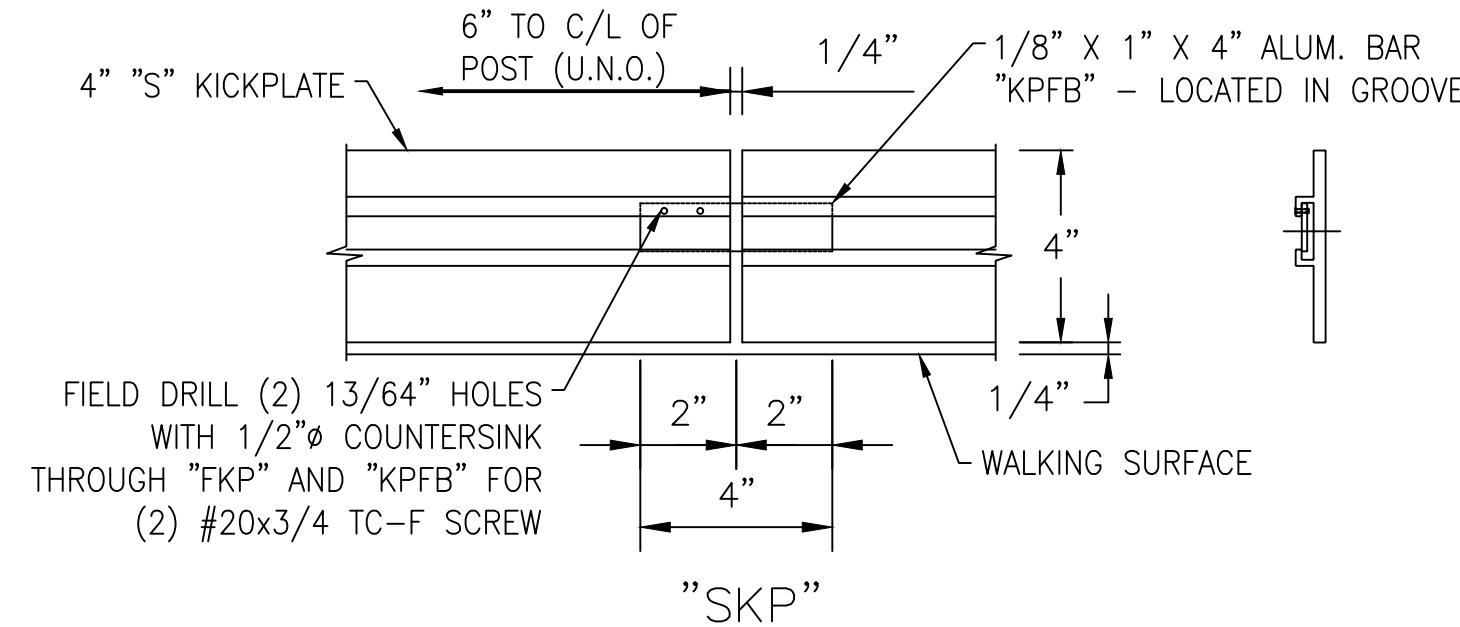
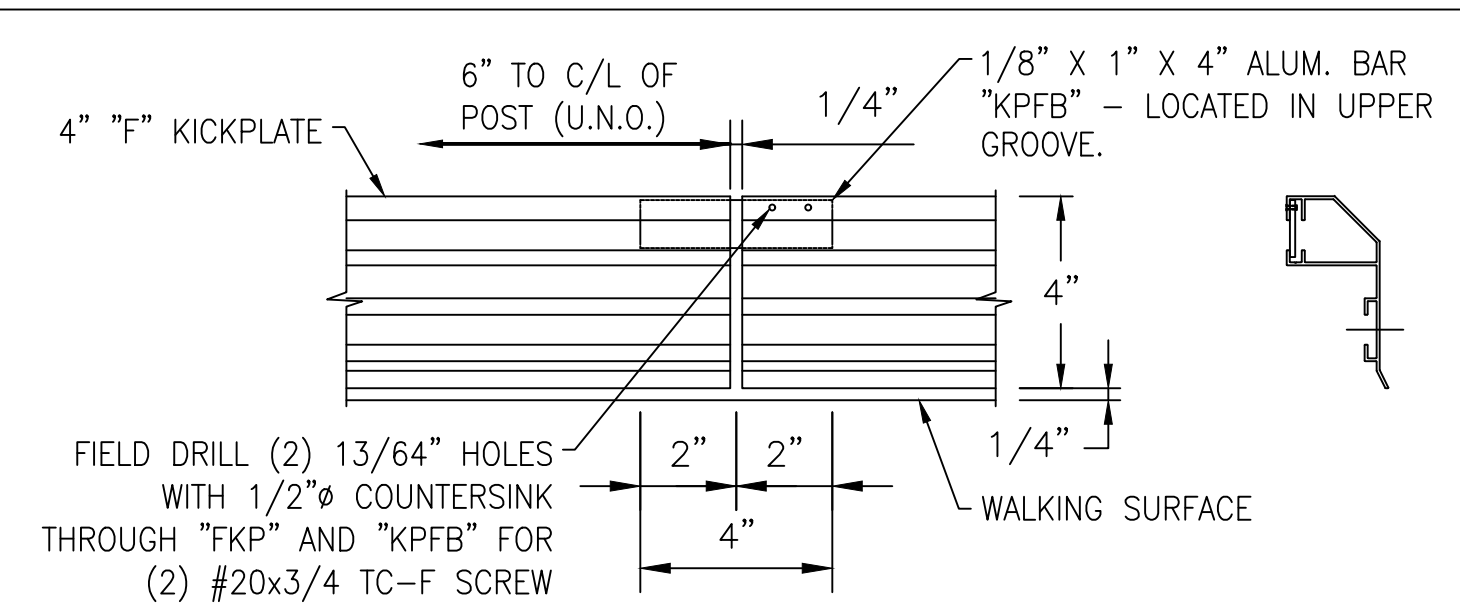
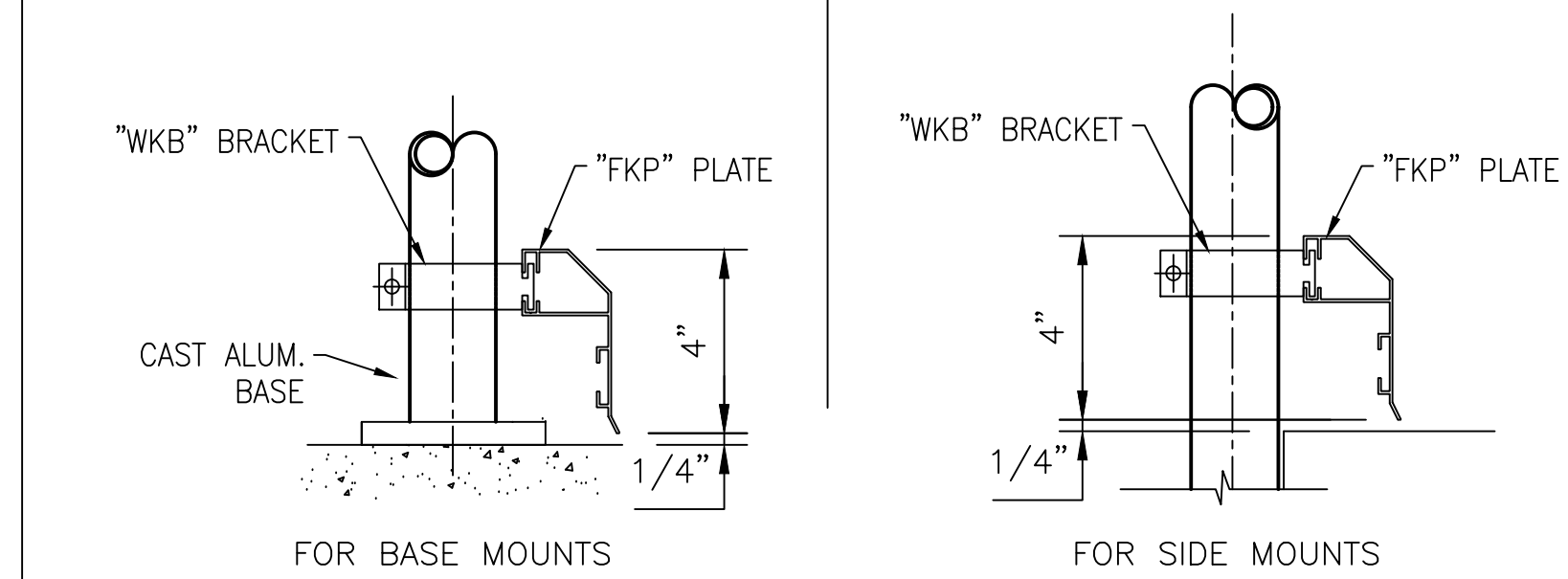
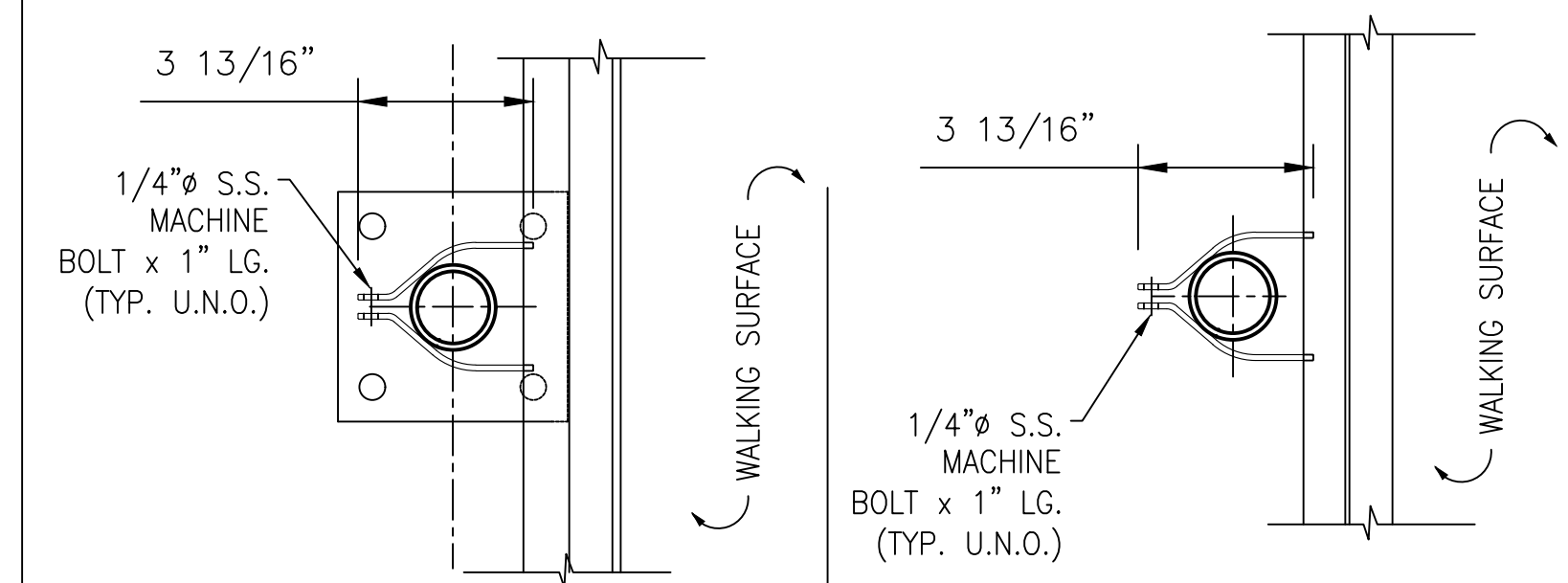
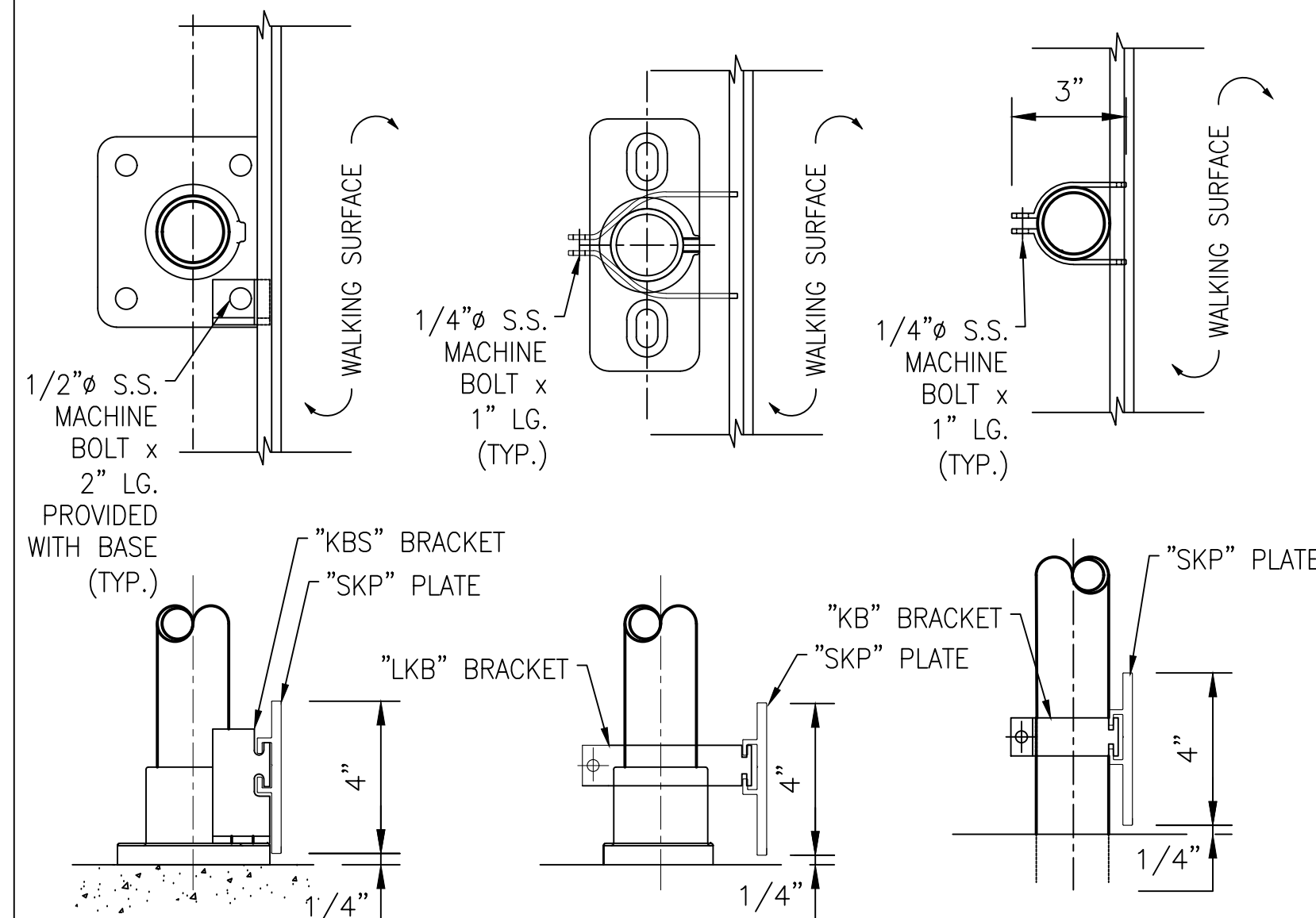


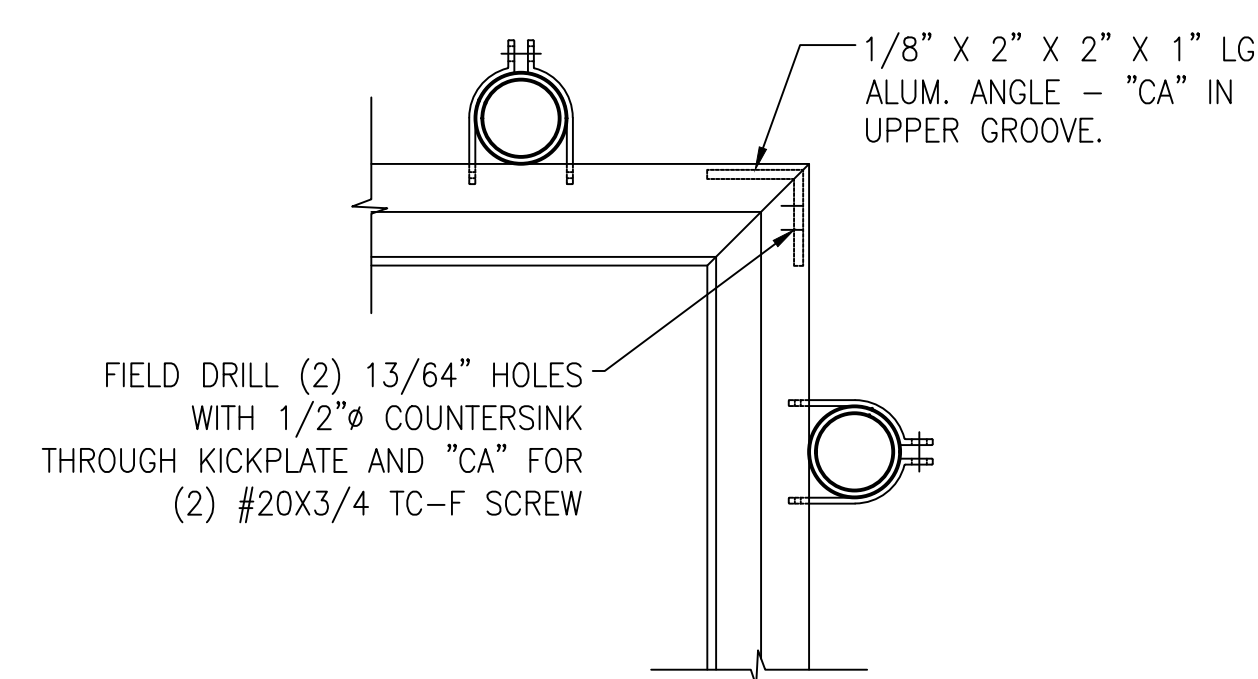
PLATE EXPANSION JOINT



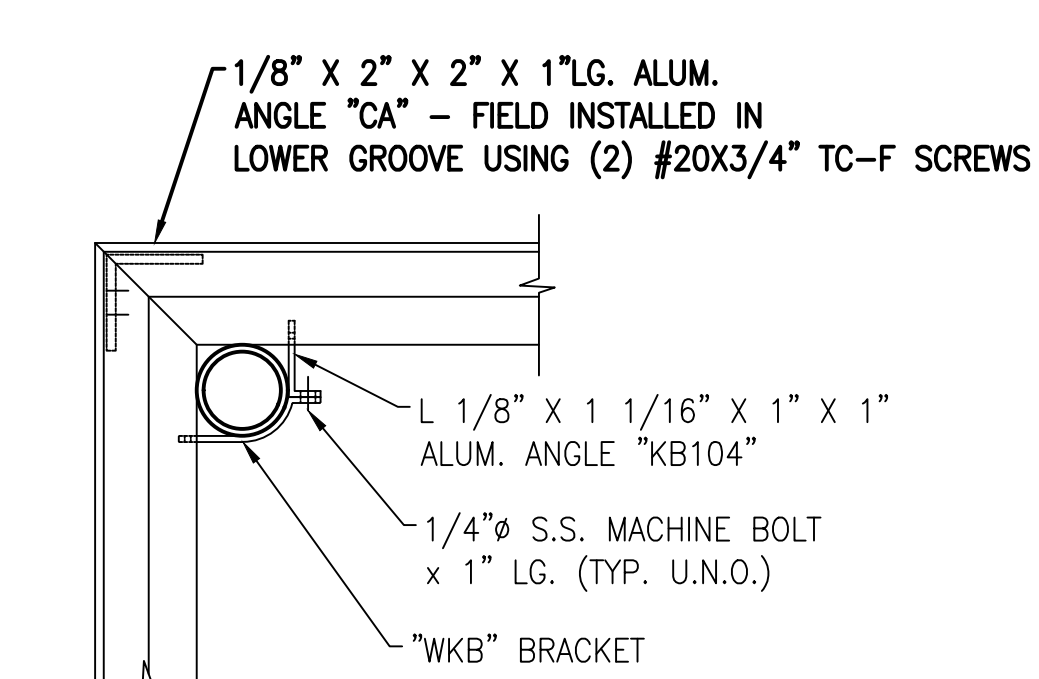
"FKP" INSTALLATION DETAIL



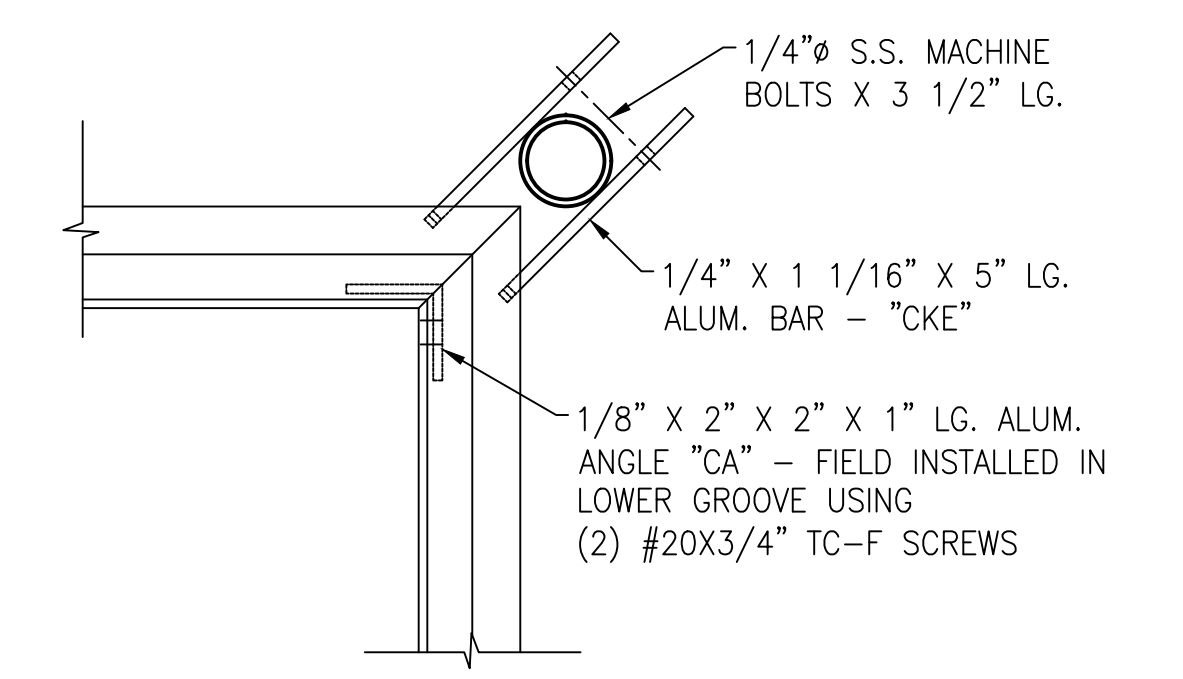
"SKP" INSTALLATION DETAIL



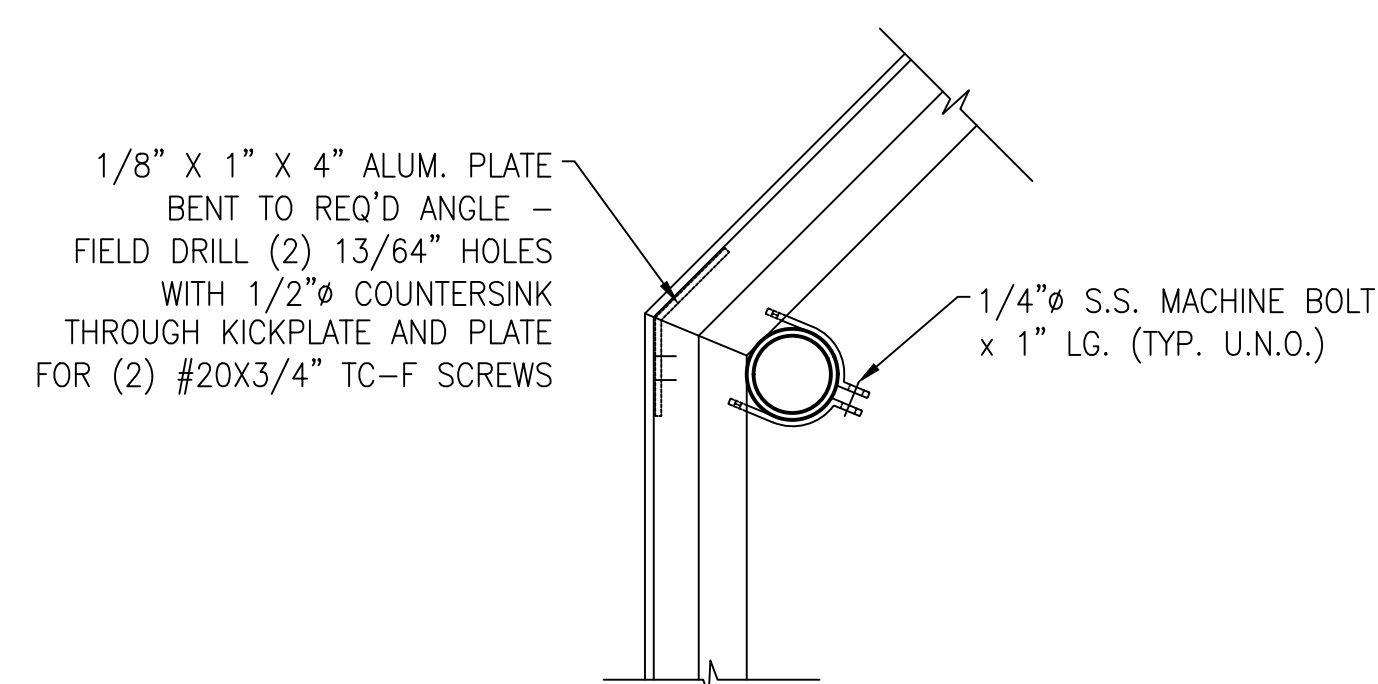
INSIDE 90 CORNER DETAIL



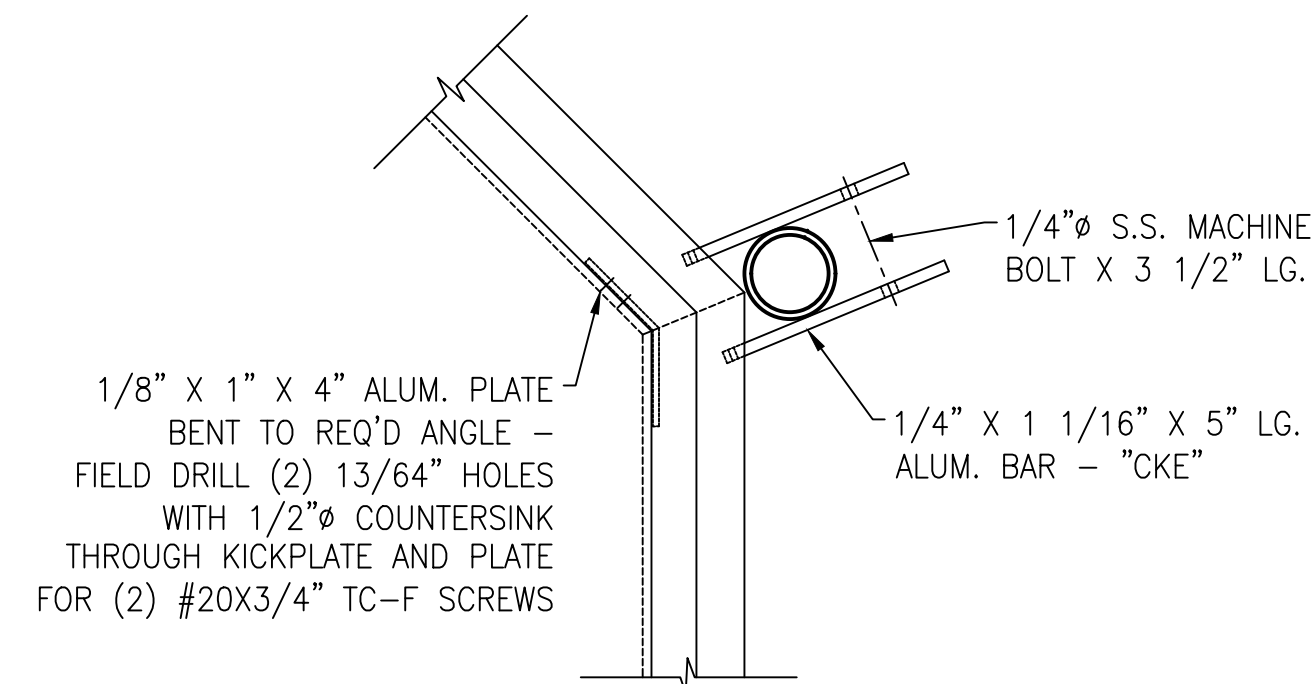
OUTSIDE 90 CORNER ENDPOST DETAIL



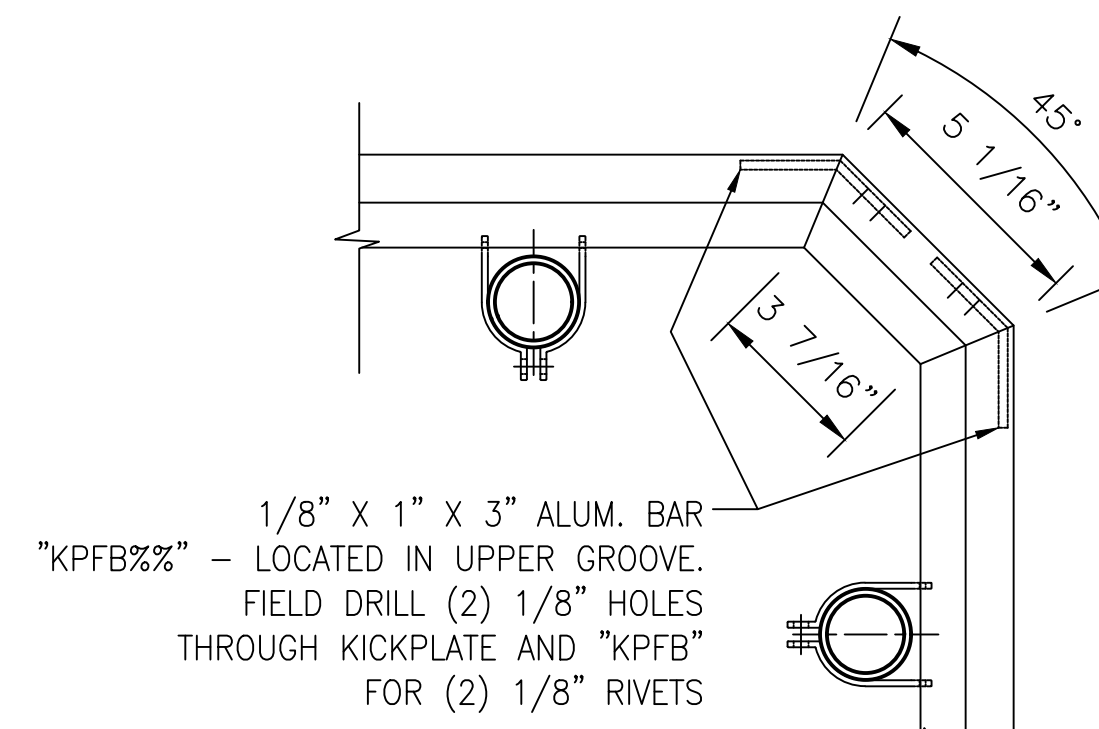
INSIDE 90 CORNER ENDPOST DETAIL



OUTSIDE BEND CORNER DETAIL



INSIDE BEND CORNER DETAIL



OUTSIDE 90 CORNER DETAIL

TYPICAL NOTES:

- 1.) ALL KICK PLATE SHALL BE:
 - a) 4" EXTRUDED ALUMINUM "FKP" OR "SKP" PLATE.
 - b) SHIPPED LOOSE IN 24'-0" STOCK LENGTHS FOR FIELD CUTTING AND DRILLING AS REQ'D.
 - c) FIELD ATTACHED TO POSTS.

2.) INSTALL USING 1/4" S.S. BOLT (U.N.O.)

ERECTOR NOTE:

TO INSTALL TCF BOLTS - DRILL A 13/64" PILOT HOLE WITH A 1/2" COUNTERSINK AND TIGHTEN TO FIT.

REV	DESCRIPTION	DATE
<p>3000 YOUNGFIELD ST. SUITE 275 WHEAT RIDGE, CO 80215 Ph. (720)508-3819 FAX. (720)409-3843</p>		
STANDARD DETAILS CITY, ST ALUMINUM HANDRAIL - WELDED SYSTEM - SHOP-ASSEMBLED		
DESIGNER	DESIGNER	CUSTOMER
CUSTOMER JOB #	XXXX-XX	PRINT DATE
3/13/2020	ISSUE DATE	3/13/2020
CONTRACT NO	XXX-XXX	DRAWING NO.
NTS	SCALE	KP-1

NOTICE TO CONTRACTOR AND ERECTOR:
 BACK CHARGES FOR CORRECTIVE WORK OR REPLACEMENT MATERIALS WILL NOT BE ACCEPTED UNLESS AUTHORIZED BY PEAK TO PEAK ENGINEERED RAILINGS, INC. BEFORE SUCH COSTS ARE INCURRED